

Vehicle: Toyota Landcruiser 76/78/79 VDJ V8 Models
Year Model: 2011-2013
Product: Auxiliary Battery Tray
Product Code: BT019

Page 1 of 2

Fits up to N70zz 12 inch case battery.

DRILLING REQUIRED FOR CORRECT INSTALLATION

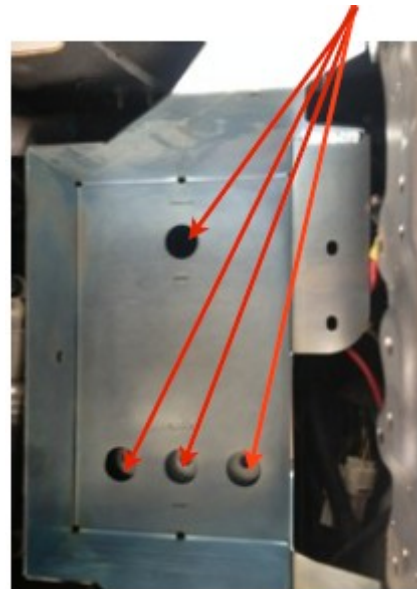
1. Battery tray fits into the left hand passenger side of the vehicle under the bonnet.



2. There is a module fixed to the skirt in the area where the tray fits, remove and move towards the fire-wall, re-fix.

Sit Battery tray into position, line up the tray with threaded holes in the skirt and fit 2 x 6mm bolts.

3. Mark the four holes in the base of the tray then remove tray & drill. Be careful to check distance under skirt to tyre etc. Re-fit tray and place 4 x 6mm bolts, washers & nuts and tighten all bolts.



4. Sit battery in tray, fit battery hold down & tighten.

SEE NEXT PAGE FOR SPECIFIC A.B.S. RELOCATION INSTRUCTIONS FOR A.B.S. MODELS—REQUIRED PRIOR TO FITTING TRAY

Comes complete with:
4 x 6mm bolts, nuts & washers
2 x 6mm bolts
1 x hold down with J hooks

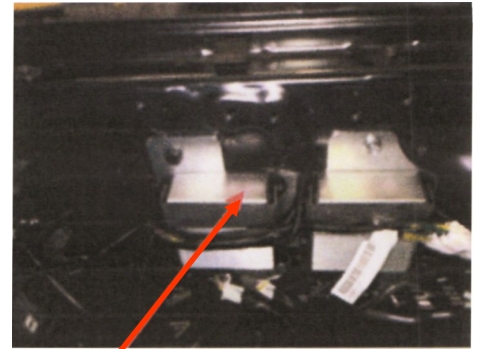
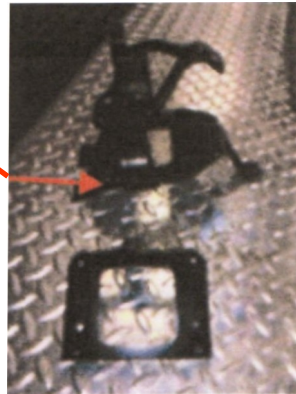
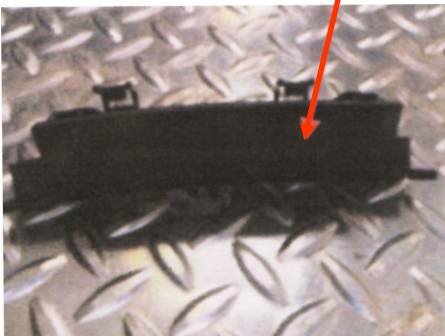
Vehicle: Toyota Landcruiser 76/78/79 VDJ V8 Models
Year Model: 2011-2013
Product: Auxiliary Battery Tray
Product Code: BT019

Fits up to N70zz 12 inch case battery.

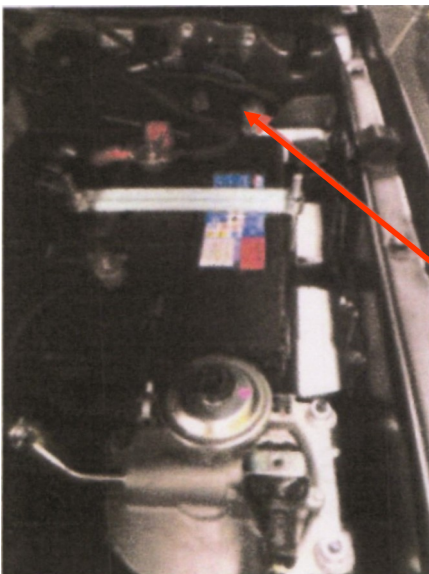
RE-POSITION OF A.B.S. MODULES

1. Before proceeding with installation please arrange to remove & relocate the A.B.S modules & wiring loom.
2. Remove A.B.S. brackets that hold A.B.S. modules from inner guard. Then remove modules from brackets. Discard original brackets (retain original screws).

3. Remove black loom protection cover from main wiring loom. Re-position wiring loom down towards the fire wall.



4. Mount A.B.S. Modules to alloy plate supplied, with original screws retained in #2 above. Mount alloy plate to inner guard using original bolt holes in inner guard.



5. Mount BC-DC Unit to batter tray BEFORE installing battery tray per instructions on Page 1.