

VEHICLE Holden Colorado RG 2011-On

PRODUCT Auxiliary Battery Tray

PRODUCT CODE BT105_BLACK

NOTE Suggested fitment of dual battery set up to be completed by qualified 12v automotive technician.

TOOLS REQUIRED:

- 10mm Socket & Spanner
- 12mm Socket & Spanner
- 13mm Socket & Spanner
- 8mm Drill Bit

HARDWARE SUPPLIED:

- 9 x M8 x 16mm
- 2 x M8 x 30mm
- 6 x M8 Flange Nut
- 10 x M8 Flat Washer

HARDWARE SUPPLIED:

- Battery Tray Main Body
- ECU Relocation Bracket x 2
- Lower Mounting Arm Washer Plate
- 2 x Tie Down Rod



1. Remove main battery and tray

See figure 1.

2. Relocate the ECU:

- Unplug the ECU and unclip it from the plastic mounting bracket.
- Remove 3 bolts holding the plastic mounting bracket and discard bracket.
- Attach the supplied mounting brackets to the ECU, using 3 x M8 x 16mm bolts, washers and nuts. Place it back in the engine bay against the passenger side wheel well.
- Secure in place using the captive nut located behind the washer fluid filler neck using the factory bolt removed in step 3.
- Using the rearmost bracket as a guide. Drill an 8mm hole through the wheel well. Rust protect and secure the bracket with the supplied M8 x 30mm bolt, washer and nut. See figure 2.

3. Remove and discard brake line bracket.

See figure 3.

- #### 4. Fit battery tray ensuring the lower arm is between the inner guard and brake lines. This will require the manipulation of the main A/C line and wiring. Do so to ensure all wiring and plugs can be easily reconnected.

See figure 4.



Figure 1



Figure 2



Figure 3



Figure 4

VEHICLE Holden Colorado RG 2011-On

PRODUCT Auxiliary Battery Tray

PRODUCT CODE BT105_BLACK

NOTE Suggested fitment of dual battery set up to be completed by qualified 12v automotive technician.

5. Secure lower arm to the inner guard using 3 x M8 x 16mm nuts and bolts. Only finger tighten at this stage.
See figure 5.

6. Secure forward-facing tab to the captive nuts using 2 x M6 x 16mm bolts.
See figure 6.

7. Secure the smaller side mounting tab to the captive nut where the bolt from step 2 was removed.

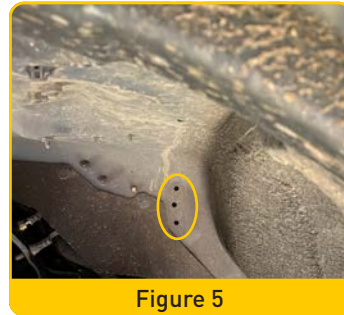


Figure 5

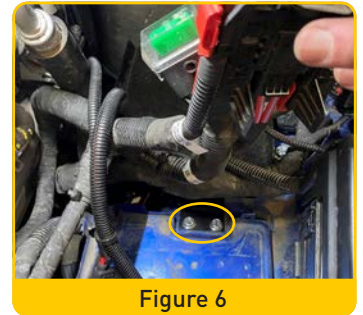


Figure 6

8. Mark and drill an 8mm hole in the inner guard using the predrilled hole in the rear tab of the tray. Rust protect and secure battery tray to inner guard using an M8 x 30mm bolt and nut.

9. Tighten all nuts and bolts.

10. Reconnect all wiring to the ECU.

11. Fit and secure auxiliary battery with supplied battery strap and Battery tie down bolts. Secure strap to vehicle using an M8 x 16mm bolt, washer and nut.

12. Refit factory battery tray and battery.