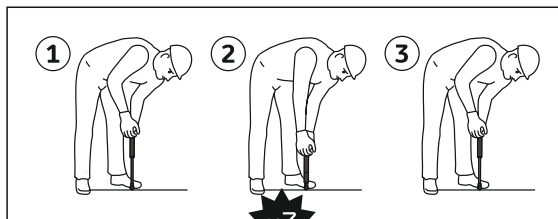
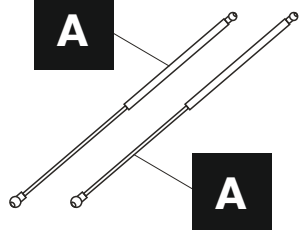
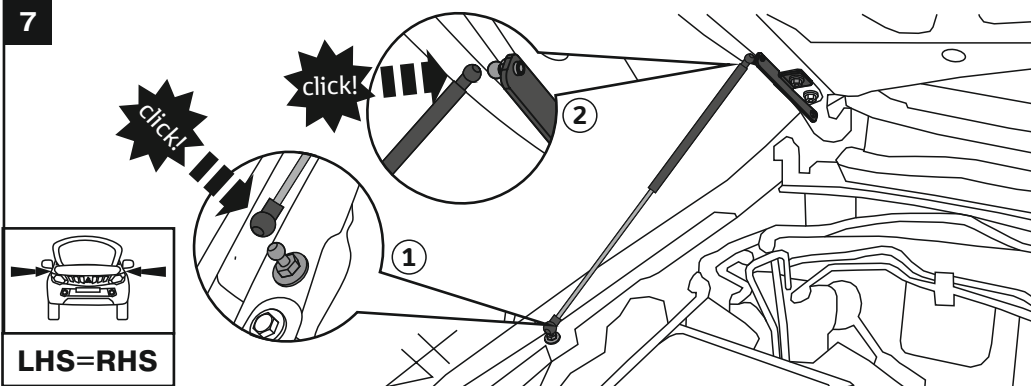


6



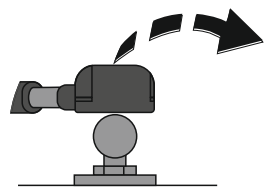
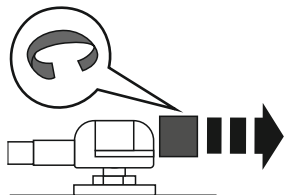
7



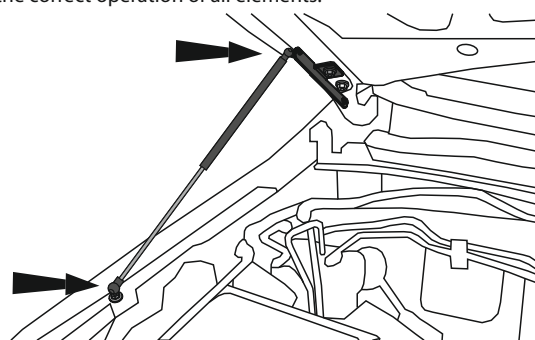
LHS=RHS



Attention! If it's needed to remove installed gas strut, disassemble how shown on the picture. Operate with the hood being totally open.



Attention! After installation, check the correct operation of all elements.



Mitsubishi L200 / Pajero Sport

Drivetech AXA
...driven by quality

HOOD GAS STRUTS

Installation instructions



Model year: 2015-/2016-

Stock No.: DT-BS001

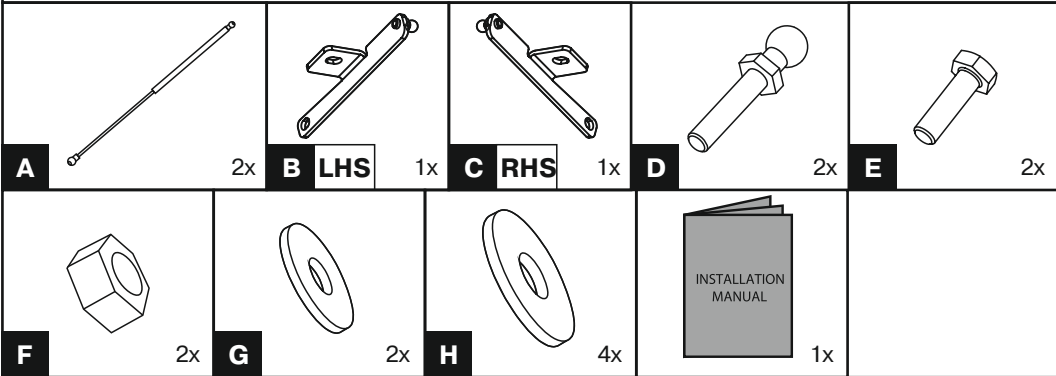
Compatibility: all types

⚖ Weight: 1 kg

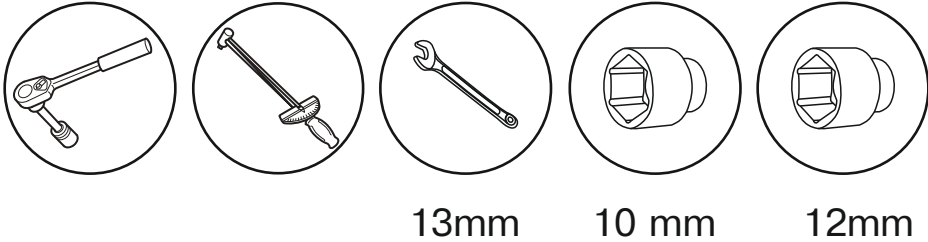
🕒 Installation time: 30 min

Issue #1 from 22.07.2016

2A.ST.4007.1



Required tools



Attention!

Before installation of gas struts, open the hood and check that there is no additional equipment installed in engine bay which can block installation.

