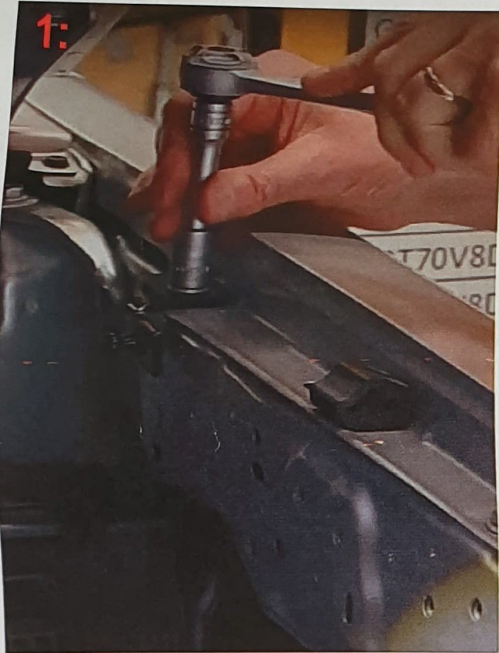


GRUNT

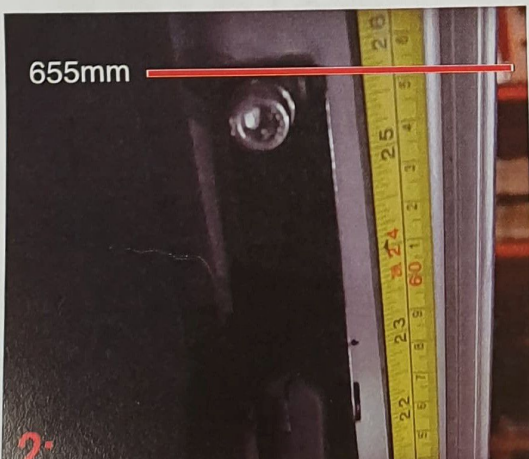
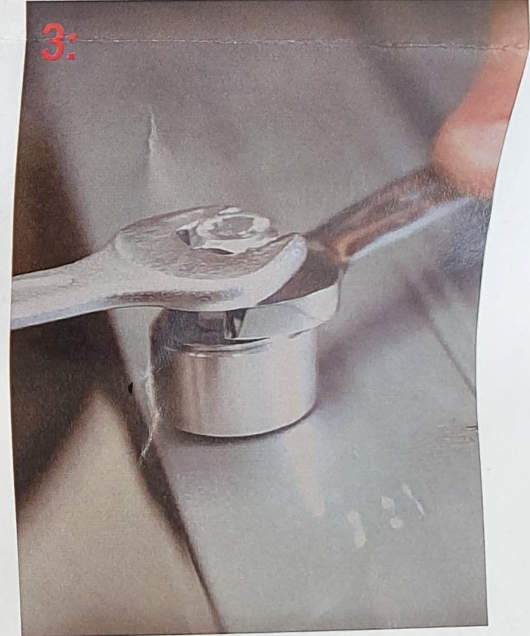
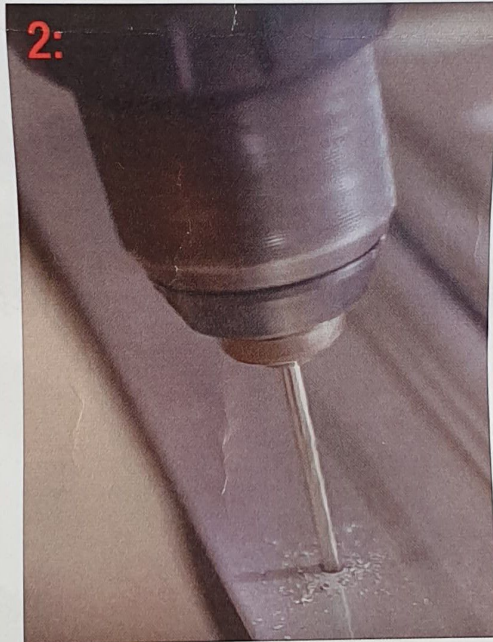
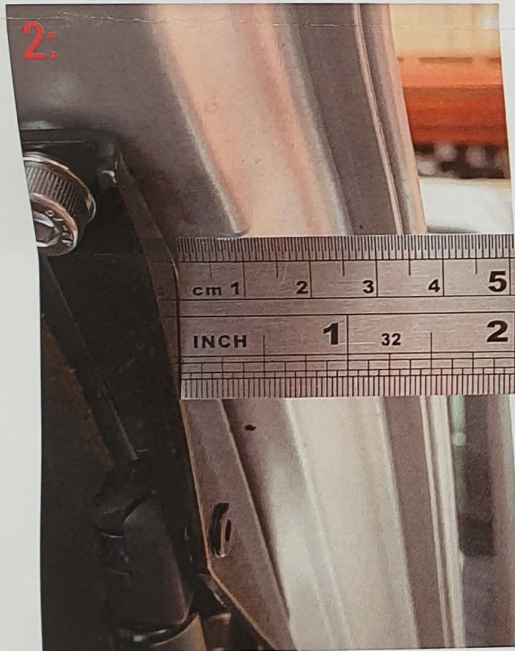
INSTALLATION INSTRUCTIONS TOYOTA 70 SERIES LANDCRUISER BONNET STRUT KIT PART NUMBER: GBS-70



1: Install the the 2 x Z brackets using the guard bolts approx 100mm from the fire wall making sure the balls are facing forward.

2: Mark and position the 2 x 11mm holes for the nutserts careful not to drill to far and risk damage to the bonnet

measurements for this are 38mm from the outer edge of the bonnet to the outside edge of the bracker & 655mm from the bottom edge of the bonnet to the top edge of the bracket.



3: Use the nutsert tool to set the nutserts.

GRUNTY

INSTALLATION INSTRUCTIONS TOYOTA 70 SERIES LANDCRUISER BONNET STRUT KIT
PART NUMBER: GBS-70



4: Install the brackets with the ball studs facing inwards using the stainless bolts and split washers provided.



5: Last step is to push the gas struts onto the brackets as shown.

NOTES:

This kit is a modification & installed at your own discretion.

We are not liable for incorrect fitment.

Professional installation recommended