

GRUNT

CHEV SILVERADO 1500 TAILGATE SEAL KIT GTG-1500



WARNING:

APPLICATION OF SELF ADHESIVE SEAL

The surface must be free from dirt, dust, oil & moisture.
Surface temperature should be approximately 20°C - 30°C.
Use of a heat gun is recommended.
Cleaning before application of Grunt 4x4 seal kits is to be done
using a non residual cleaner eg: Prepwash / Prep sol / Isopropyl Alcohol etc

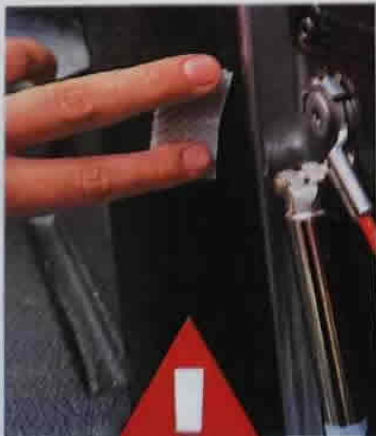
Hints:

Only peel and release 200mm - 300mm at a time to prevent the adhesive picking up foreign material.
The sponge seal is self adhesive and for best results excite the glue before applying by placing into direct sunlight or heating gently with a heat gun or hair dryer.

Adhesive should be placed on firmly and uniformly 200mm at a time.
DO NOT STRETCH THE SEAL WHEN APPLYING AS IT WILL COME OFF OVER TIME



1: Install the long seal to the body keeping it tight to the underside of the tubliner as pictured



**REMINDER
CLEAN ALL SURFACES
BEFORE APPLICATION**

**To make it easier have a friend help you do this and take your time.
Only peel 200mm of backing at a time to control the rubber**



GRUNT

CHEV SILVERADO 1500 TAILGATE SEAL KIT GTG-1500



WARNING:

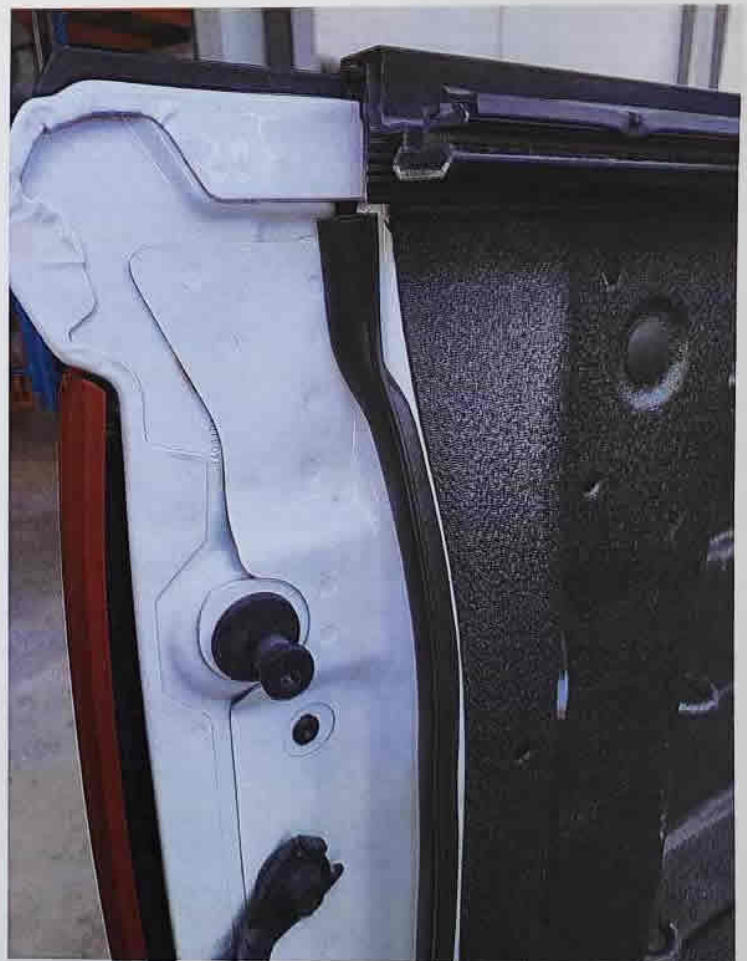
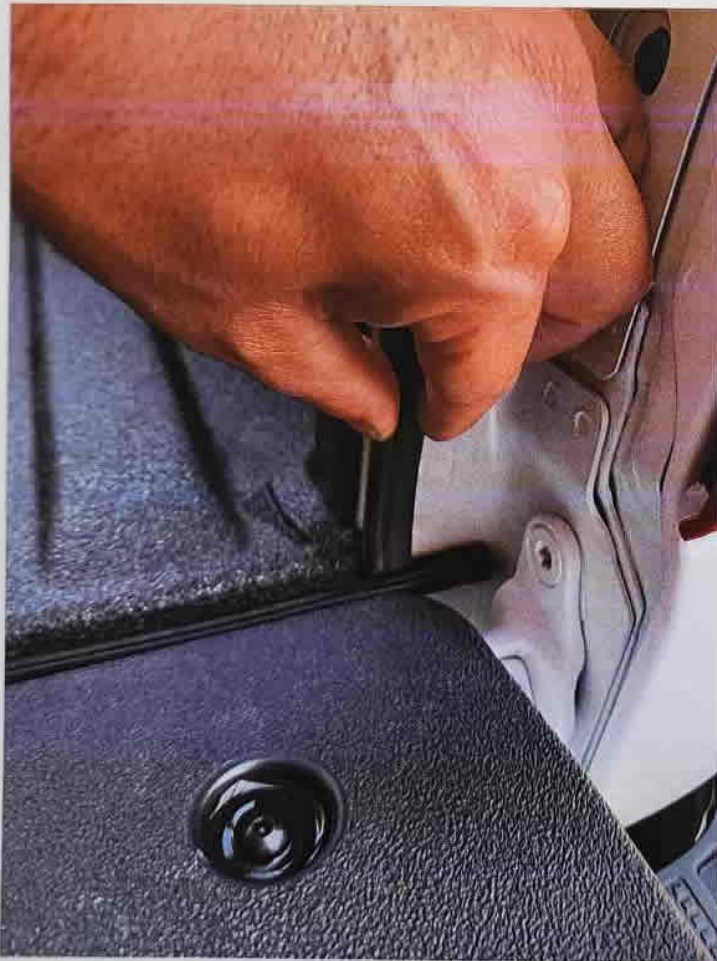
APPLICATION OF SELF ADHESIVE SEAL

The surface must be free from dirt, dust, oil & moisture.
Surface temperature should be approximately 20°C - 30°C.
Use of a heat gun is recommended.
Cleaning before application of Grunt 4x4 seal kits is to be done using a non residual cleaner eg: Prepwash / Prep sol / Isopropyl Alcohol etc

Hints:

Only peel and release 200mm - 300mm at a time to prevent the adhesive picking up foreign material.
The sponge seal is self adhesive and for best results excite the glue before applying by placing into direct sunlight or heating gently with a heat gun or hair dryer.

Adhesive should be placed on firmly and uniformly 200mm at a time.
DO NOT STRETCH THE SEAL WHEN APPLYING AS IT WILL COME OFF OVER TIME



2: Install the two side seals following the body line as pictured. Only peel 100mm of backing at a time to give you control in placing the seal. The adhesive is very strong and will not release without tearing the rubber.

GRUNT

CHEV SILVERADO 1500 TAILGATE SEAL KIT GTG-1500



WARNING:

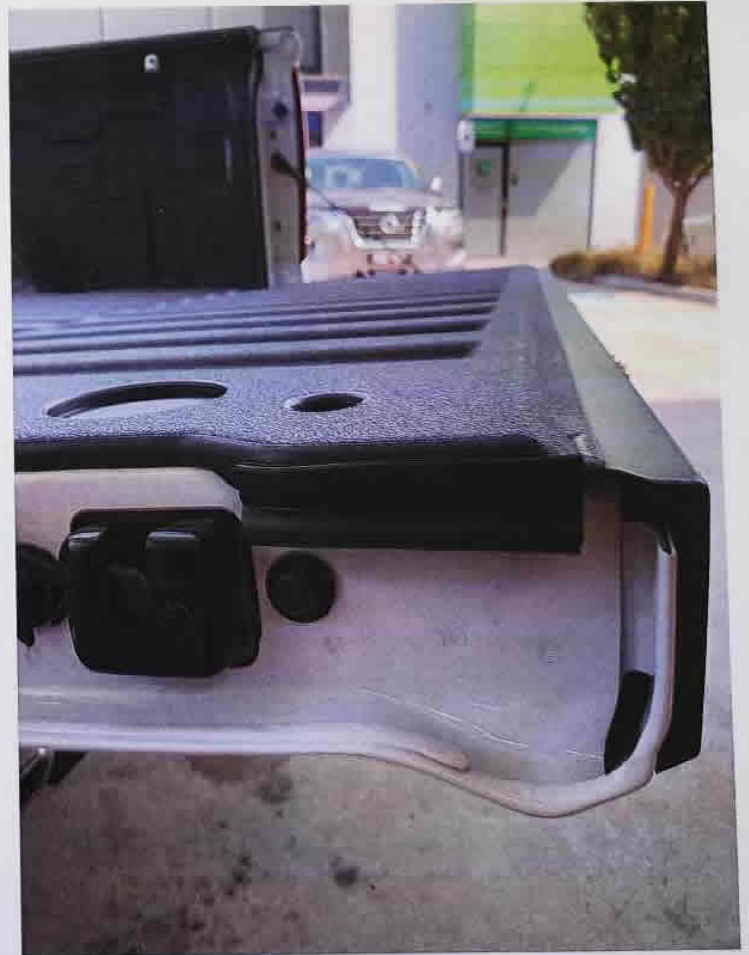
APPLICATION OF SELF ADHESIVE SEAL

The surface must be free from dirt, dust, oil & moisture.
Surface temperature should be approximately 20°C - 30°C.
Use of a heat gun is recommended.
Cleaning before application of Grunt 4x4 seal kits is to be done using a non residual cleaner eg: Prepwash / Prep sol / Isopropyl Alcohol etc

Hints:

Only peel and release 200mm - 300mm at a time to prevent the adhesive picking up foreign material.
The sponge seal is self adhesive and for best results excite the glue before applying by placing into direct sunlight or heating gently with a heat gun or hair dryer.

Adhesive should be placed on firmly and uniformly 200mm at a time.
DO NOT STRETCH THE SEAL WHEN APPLYING AS IT WILL COME OFF OVER TIME



3: Install the pinchwelds by pressing them to the underside lip of the tubliner on each side

www.grunt4x4.com.au