

4x4 Parts & Service Specialists



Remove Tailgate Strap Bolt



Remove Body Strap Bolt



Remove the two Tail light Bolts followed by the light assembly



Factory hole that the Down Strut Mounts to



Insert the strut & strap through the holes as shown placing the thin washer against the body



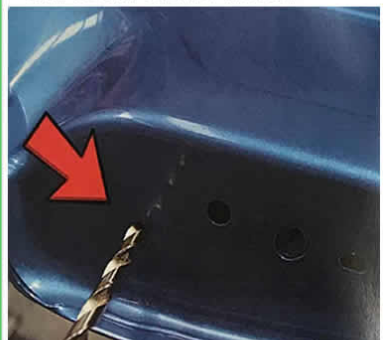
Place the thicker washer on the back followed by the friction nut then tighten



Remove tailgate access panel bolts as shown



Bolt on the template as shown & mark the tailgate as shown



Drill the tailgate on the mark you just made. drill a pilot hole first then drill to 9mm



Installing the cable to tailgate



Place bolt supplied through the hole placing thin washer against tailgate first



Screw the friction nut inside tailgate placing thicker washer on first

THESE INSTRUCTIONS ARE A GUIDE WE ALWAYS RECOMMEND BEING INSTALLED BY A PROFESSIONAL & TAKE NO RESPONSIBILITY FOR DAMAGE CAUSED BY INCORRECT FITMENT OF THE PRODUCT TO YOUR VEHICLE

4x4 Parts & Service Specialists



Tighten the tailgate strap bolt
Do Not Overtighten as the cable needs to move freely



Hold the friction nut inside the tailgate with a 12mm spanner



Remove the rubber locating blocks from the tailgate & ute tub



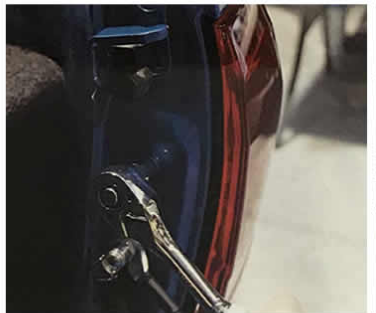
Remove the tailgate hinge bolt closest to the body



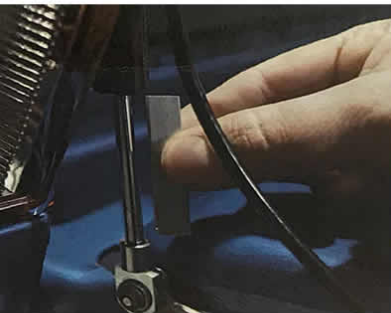
Install the strut as shown the replace & tighten the bolt



Install the cable locating rubber 80mm back from the body as pictured



Reinstall the tail light



Repeat the process for the passenger side for the Easy Up Strut removing the spacer once installed

NOTES

In some cases these bolts can prove difficult to remove. This is why we recommend professional installation.

THESE INSTRUCTIONS ARE A GUIDE WE ALWAYS RECOMMEND BEING INSTALLED BY A PROFESSIONAL & TAKE NO RESPONSIBILITY FOR DAMAGE CAUSED BY INCORRECT FITMENT OF THE PRODUCT TO YOUR VEHICLE