

VEHICLE Toyota Landcruiser 300 Series 2022+
PRODUCT Recovery Point
PRODUCT CODE RPCRU300
NOTE During recovery always use both recovery points

Hardware Supplied:

- 2x M12*P1.25 RH*130L Hexagon bolts half thread
- 2x M12*P1.25 RH nylon nuts
- 4x M12 washer Ø32*Ø13.2*3.0t
- 6x M12 washer Ø25*Ø13*2.0t
- 6x M12 spring washer Ø20.5*Ø12.5*2.6t
- 2x M12*P1.25 RH*40L Hex head bolts full thread
- 4x M12*P1.25 RH*55L Hexagon bolts half thread

Component List:

- 2x Roadsafe Recovery Points
- 2x Crush tubes
- 2x 2mm Lower shims
- 2x Lamination plates
- 1x 4mm Lower shim
- 2x Longitudinal shims
- 2x 2mm Upright shims
- 2x Sway bar mount spacers

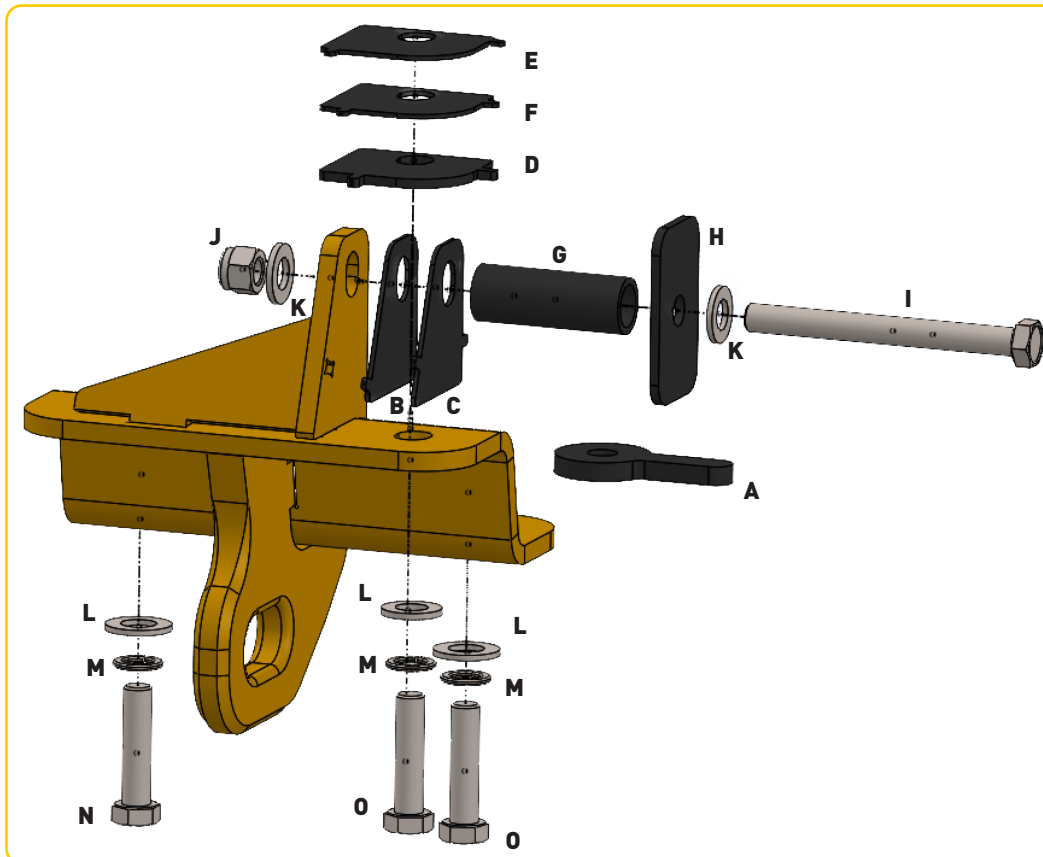
Tools Required:

- General hand tools

Before Installation:

This recovery point is designed to fit the Toyota Landcruiser 300 Series, as well as a range of bull bar applications. Each bull bar application may be slightly different and may require the modification of brackets and other components.

ASSEMBLY IMAGE



Parts

ITEM	DESCRIPTION
A	Swaybar Mount Spacer
B	2mm Upright Shim 1/2
C	2mm Upright Shim 2/2
D	4mm Lower Shim 3/3
E	2mm Lower Shim 2/3
F	2mm Lower Shim 1/3
G	Crush Tube
H	Lamination Plate

Hardware

ITEM	DESCRIPTION
I	M12*P1.25 RH*130L Hexagon Bolts Half Thread
J	M12*P1.25 RH Nylon Nuts
K	M12 Washer Ø32*Ø13.2*3.0t
L	M12 Washer Ø25*Ø13*2.0t
M	M12 Spring Washer Ø20.5*Ø12.5*2.6t
N	M12*P1.25 RH*40L Hex Head Bolts Full Thread
O	M12*P1.25 RH*55L Hexagon Bolts Half Thread

VEHICLE Toyota Landcruiser 300 Series 2022+
PRODUCT Recovery Point
PRODUCT CODE RPCRU300
NOTE During recovery always use both recovery points

1. Position vehicle to allow easy access to front of chassis rails.

2. Remove bash plates.

3. Remove both factory front tie down points.

4. Remove 4x bolts holding middle cross member and insert 2x longitudinal shims. Secure middle cross member back into original position.
See figure 1.

5. Remove all 4 x sway bar bolts and allow sway bar to rest on middle cross member.

6. Offer recovery point up to vehicle placing it between the sway bar and the chassis. Loosely secure recovery point using:

a. 1 x M12x1.25x55mm bolt, washer, and spring washer through sway bar bracket into chassis.

b. 1 x M12x1.25x40mm bolt, washer, and spring washer through the hole closest to the centre of the vehicle.
See figure 2.

7. Repeat for the opposite side of the vehicle.

8. Insert the sway bar mount spacer (A) between the rear sway bar mounting hole and the chassis and loosely secure with factory bolt.
See figure 3.

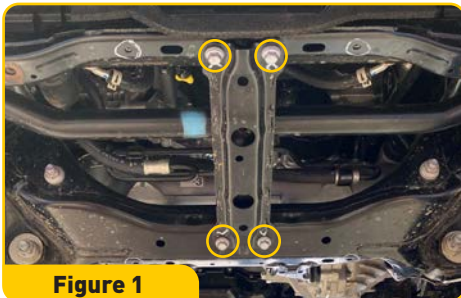


Figure 1



Figure 2

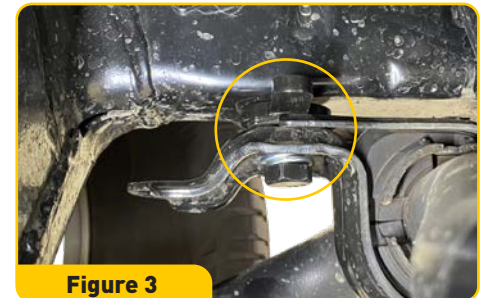


Figure 3

The Roadsafe Landcruiser 300 series recovery point is supplied with a selection of shims depending on your application. If your vehicle has no bullbar fitted, the use of all shims provided is essential for correct fitment. If your vehicle is fitted with a bullbar, the correct selection of shims will need to be selected depending on the location and thickness of the bullbar brackets. If a bullbar bracket utilises the same mounting location, you will need to measure and remove the respective shim to allow proper locating of the recovery point.

The shims included are:

- 2x 2mm shims (E, F) and 1 x 4mm shim (D) for the lower chassis mounting location.
- 2x 2mm shims (B, C) for the upright chassis mount location

SEE ASSEMBLY IMAGE

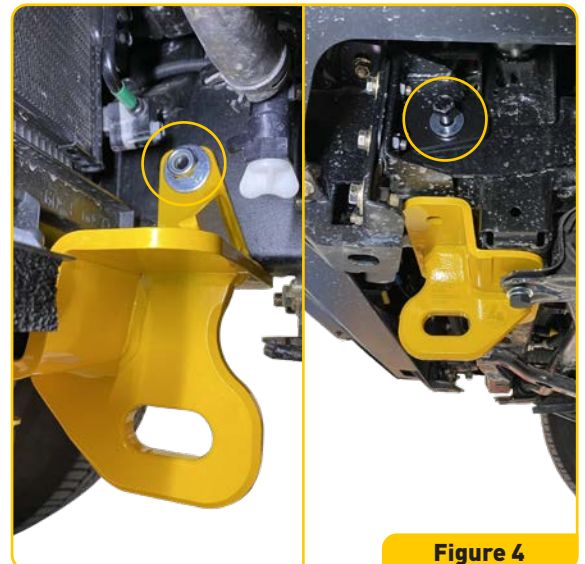


Figure 4

VEHICLE Toyota Landcruiser 300 Series 2022+
PRODUCT Recovery Point
PRODUCT CODE RPCRU300
NOTE During recovery always use both recovery points

9. Using the lamination plate, crush tube, M12x1.25x130mm bolt, 2 x washer and Nyloc, loosely secure the recovery point through the chassis rail ensuring the correct selection of shims are selected for your application.

See figure 4.

Note: Some bullbar applications may already have a crush tube installed into the rail which can be used.

10. Using the M12x1.25x55mm bolt, washer, spring washer and correct selection of provided shims, loosely secure the recovery point to the chassis.

See figure 5.

11. Repeat steps 9 & 11 for the opposite side of the vehicle.

12. Tighten all bolts to the correct specified torque using the below torque table for reference.

13. Reinstall and secure vehicle bash plate(s).



Figure 5

Torque Specs

	8.8	10.9	12.9
M10	41-60 Nm	59-85 Nm	65-94 Nm
M12	71-105 Nm	102-150 Nm	114-164 Nm
M14	112-168 Nm	161-240 Nm	182-265 Nm
M16	175-260 Nm	250-371 Nm	282-406 Nm

Ensure all supplied and specified components are used during the installation of tow recovery points. Failure to do so will significantly reduce the Working Load Limit (WLL) specified for each individual point, which can result in serious injury or death.

- Opposite Lock bullbar illustrated throughout fitting instructions.
- Confirmed fitment of Roadsafe Recovery Points with factory bumper.