

**COMPATIBLE WITH
PRODUCT
PART NUMBER**

TOYOTA 76 SERIES LANDCRUISER
RECOVERY POINT
RPCRU70E

ROADSAFE FITTING INSTRUCTIONS

FITTED TO 76 SERIES LANDCRUISER

1. Each side uses 2 x M10x1.25mm x 60L & 1 x M10x1.25 x 40L bolts (inserted from the inside of the chassis rail). High-tensile bolts supplied, with relevant flat & split washer.
2. The longer bolts are for the holes spaced from the chassis, with the shorter bolt for the top front hole. All models have nuts retained in chassis, ready for fitment.
3. The mounts themselves are sided, so please ensure installation to the correct side of the vehicle. In some circumstances, the RPCRU70E has been designed to protrude through the aftermarket Skid Plate where one is installed.
4. In some instances, depending upon the skid plate installed, you might need to trim two 100mm (long) x 40mm (wide) holes on each side to allow for the skid plate to be refitted.
5. Ensure three bolts per tow point are fitted and torqued to recommended settings to ensure tow points meet tested standards.

BOLT TORQUE SPECS

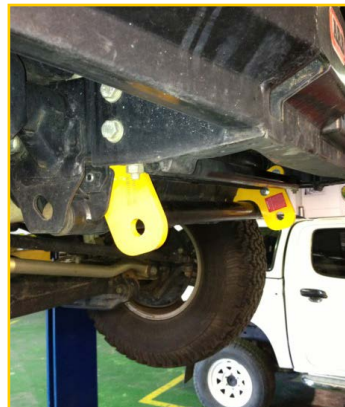
	8.8	10.9	12.9
M10	41-60 Nm	59-85 Nm	65-94 Nm
M12	71-105 Nm	102-150 Nm	114-164 Nm
M14	112-168 Nm	161-240 Nm	182-265 Nm
M16	175-260 Nm	250-371 Nm	282-406 Nm

HARDWARE SUPPLIED

- 4 x M10x1.25 x 60L bolts
- 2 x M10x1.25 x 40L bolts
- 6 x flat washers
- 6 x split washers



**TESTED TO 5000KGS
PER TOW POINT**



Ensure all supplied and specified components are used during the installation of tow points. Failure to do so will significantly reduce the Working Load Limit (WLL) specified for each individual point, which can result in serious injury or death.

IMPORTANT NOTE

Always use tow points as a matched pair teamed with an equalising bridle during any recovery situation.



roadsafe.com.au

Roadsafe - A Division of Specialist Wholesalers Pty. Ltd. ABN 64 163 280 279
VIC Phone: 03 8687 1700 QLD Phone: 07 3737 7420 Email sales@roadsafe.com.au

RECOMMENDED FOR 4WD SPECIALIST MECHANICS TO FIT. MANUFACTURERS' NAMES ARE USED FOR REFERENCE PURPOSES ONLY.