

**VEHICLE** Mitsubishi Pajero 2001-2021

**PRODUCT** Recovery Point

**PRODUCT CODE** RPPAJ04

**IMPORTANT NOTE: DURING RECOVERY ALWAYS USE BOTH RECOVERY POINTS**  
**FEA & PHYSICAL DESTRUCTION TESTING COMPLETED WLL 5000KG TESTED IN AUS NATA LAB**

#### Hardware List:

- Recovery Point Main Body (X2)
- Double Washer Plate (X2)
- Sway bar mount support Bracket (X2)
- Cross Tube Lock Plate (X2)
- Cross Tube Lock Dowel (X2)
- Cross Tube Insert (X2)
- Tie Down Point Spacer Plate (X2)
- Tie Down Point Clamp Plate (X2)
- Tie Down Point Locator (X2)
- Sway Bar Mount Plate (X2)
- Sway Bar Lamination Plate (X2)
- Sway Bar Crush Tube (X4)
- Sway Bar Washer Plate (X4)

#### Component List:

- M12 x P1.25 RH x 70L (x2)
- M12 x P1.25 RH x 130L (X2)
- M12xP1.25 RHx60L (X2)
- M12 x P1.25RH x 50L (X4)
- M16 x P2.0 RHx65L (X2)
- M16 Flat Washer (X2)
- M16 Spring Washer (X2)
- M16 x P2.0 RH Nut (X2)
- M12 Flat Washer (X4)
- M12 Spring Washer (X10)
- M12 x P1.25 RH Nut (X4)
- M12 x P1.25 RH Nyloc Nut (X4)
- M12 Flat Washer (X2)

#### Tools required:

- Sockets and Ratchets
- Spanners
- Basic Hand Tools

1. Remove OEM metal undertray plate, remove 4 bolts from factory sway bar mounting location and let sway bar hang.  
See Figure 1
2. Set up sway bar recovery point mount as pictured. The 2 bolts with the crush tubes go through the existing holes in the sway bar mount and fasten on the internal side of the mount (70mm bolt on the top, 60mm bolt underneath, 2x50mm bolts for the associated recovery point holes to go through at a later stage of fitment. Nyloc nuts on the sway bar mount and spring washers with nuts on recovery point).  
See Figure 2
3. The sway bar lamination plate for the 2 mounting bolts is placed on the inside of the bracket to provide further re-enforcement to the bracket. Install sway bar mount through existing holes and position as pictured. **DO NOT FASTEN YET.**  
See Figure 3



Figure 1



Figure 2



Figure 3

**VEHICLE** Mitsubishi Pajero 2001-2021

**PRODUCT** Recovery Point

**PRODUCT CODE** RPPAJ04

4. Set up recovery point rear mount as pictured (130mm bolt with spring washer and flat washer on the outside cross tube insert up against chassis tube, cross tube lock plate then cross tube lock dowel). Set recovery point aside when this has been set up, ready for installation in a later step.  
See Figure 4

5. Place tie down point locator and tiedown point spacer into tiedown point ready for front bolt installation.  
See Figure 5

6. Place cross tube assembly of spacers and locking nuts (**Step 4**) into the tubular hole in the chassis (cross tube), making sure the cross-tube spacer sits flush in the hole. While placing the assembly in the cross tube, place 2 protruding M12 bolts from the sway bar mount bracket through the corresponding 2 holes in recovery point (to be secured with spring washers and Nyloc nuts after initial installation).

7. While initially placing the recovery point on the sway bar mount and the pre-installed spacers and locking nuts as shown in step 4, align the tie down point bolt with black tiedown point clamp washer on the outside of the recovery point.  
Note: when installing factory stone tray slide recovery point through the OEM tow point hole prior to installing M16 bolt. Tighten when the recovery point is through the other side.  
See Figure 6

8. Re-install factory undertray plate, installation is now complete.



Figure 4



Figure 5

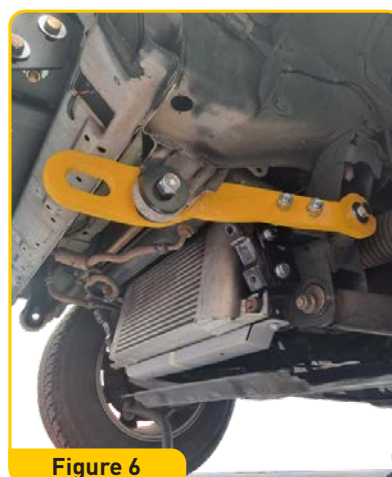


Figure 6