

INSTALLATION INSTRUCTIONS

PART DESCRIPTION: Nissan Patrol GQ-GU Coil Tower Brace Wagon			
PART LISTING			
ITEM#	PART#	QUANTITY	DESCRIPTION
1		1	COIL TOWER MAIN PLATE (DS)
2		1	COIL TOWER MAIN PLATE (PS)
3		1	CONTROL ARM MOUNT PLATE (DS)
4		1	CONTROL ARM MOUNT PLATE (PS)
5		1	CROSSMEMBER MOUNT PLATE (DS)
6		1	CROSSMEMBER MOUNT PLATE (PS)
7		2	POLYURETHANE COIL SPACER
8		2	M14 X 1.5 X 90mm BOLT
9		4	M14 FLAT WASHER
10		2	M14 X 1.5 NYLOCK NUT
12		2	M12 X 1.75 X 30mm BUTTON HEAD BOLT
13		2	M12 X 1.75 NYLOCK NUT
14		2	M12 FLAT WASHER
15		2	M10 x 1.5 x 70mm U-BOLT
16		2	M10 X 1.25 X 65mm BOLT
18		6	M10 X 1.25 X 35mm BOLT
19		16	M10 X 1.25 X 20mm BOLT
20		48	M10 FLAT WASHER
21		16	M10 SPRING WASHER
22		12	M10 X 1.25 NYLOCK NUT
23		4	M10 X 1.5 NYLOCK NUT
24		1	100mm BRAKE LINE RUBBER COVER
25		2	ZIP TIE 150mm

NOTES: Read and understand these installation instructions before beginning the installation process. Retain these installation instructions for future reference. It is recommended that this item is to be installed by a qualified person.

INSTALLATION INSTRUCTIONS

NOTE

- Approximate installation time: 2 Hours
- Ensure all parts have been received correctly.
- Ensure parts are suitable for the vehicle prior to undertaking the installation.

NOTE

Working on one side at a time can make installation easier. If coil towers are damaged, they will need to be repaired before fitting of this product is carried out. This should be done by a qualified person.

NOTE

GU Patrols with the rear AC lines may need the mounting bracket and lines adjusted, fit a rubber shield (not supplied) to prevent damage.

CAUTION

Please ensure all bolts are tightened to the correct torque setting and have been Loctite. Be careful not to damage any of the brake or fuel lines when fitting this product.

WARNING

Take care when bending or re-positioning any of the fuel or brake lines! Damage to the lines may cause injury or death.

WARNING

Do not use this brace to pull the coil hats down to repair existing damage.

Size	Torque (Nm)	Torque (ft-lb)
M10	49	36
M12	85	64
M14	135	96

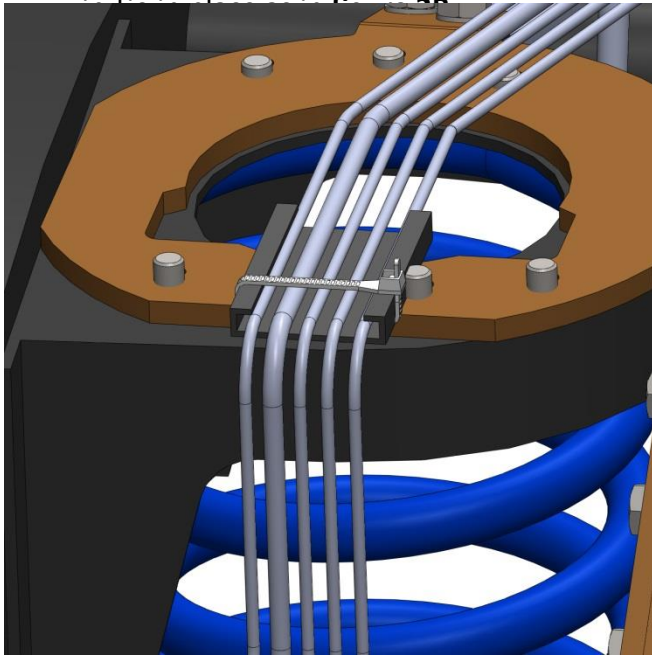


INSTALLATION INSTRUCTIONS

1. Start with the vehicle secured on a hoist and the diff supported.
2. Remove the coils as per the vehicle's service manual.
3. Starting with the passenger side fit the supplied top brace into position on top of the factory coil tower. Loosely fit with the supplied M10 x 1.25 x 20mm bolts through holes on the underside of the tower. (Refer to **figure 1**)
4. Remove the bolt at the front end of the upper control arm. Replace this bolt with the supplied M14 1.5 x 90mm bolt.
5. Fit the front support brace between the upper control arm bolt and the top brace. Loosely fit three M10 x 1.25 x 35mm bolts with washers and Nylock nuts. (Refer to **figures 1 and 2**)
6. Fit the M10 x 1.25 x 65mm bolt with flat washers and cone lock nut, through the tensioner mount on the inside of the front support brace.
7. Loosely fit the rear support brace to the underside of the tab on the back of the top brace. Use the supplied M10 x 1.25 x 20mm bolts and flat washers. **NOTE: Make sure to have the half-moon cut out of the support brace facing towards the shock.**
8. On each side loosely fit the U-Bolts around the chassis cross tube.
9. Tighten all bolts to the correct torque settings.
10. Repeat steps 3 to 8 for the driver's side. (Refer to **figure 2**)
NOTE: On the driver side the brake and fuel lines will need to be moved up so the brace can be fitted, the use of an M10 flex head ratchet spanner is advantageous to remove the brake line clamps, both on the tower and on the forward tube cross member. Unbolting the brake distribution valve from the chassis near the fuel tank will allow better access to position the driver's side top brace. If the towers are bent up or body rubbers have sagged, it can sometimes help to loosen the rear body bolts and gently pry the body away from the chassis to get slightly more clearance.
11. Fit the supplied urethane spacer under the coil hat, the bolt heads will line up with the cut-outs in the spacer. Refit the rear coils and any suspension that may have been removed for installation as per the vehicle's service manual. Make sure all bolts have been Loctite and tightened to the correct torque settings as per the vehicle service manual.

INSTALLATION INSTRUCTIONS

12. A section of rubber to protect the fuel and brake lines is supplied and should be fitted under the lines. Secure the rubber section and



OR REFERENCE

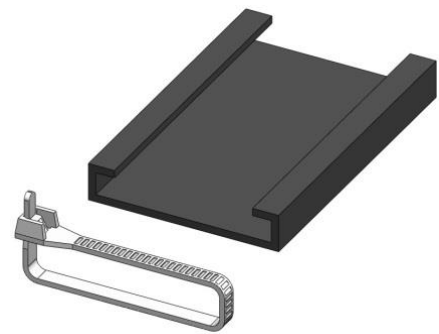
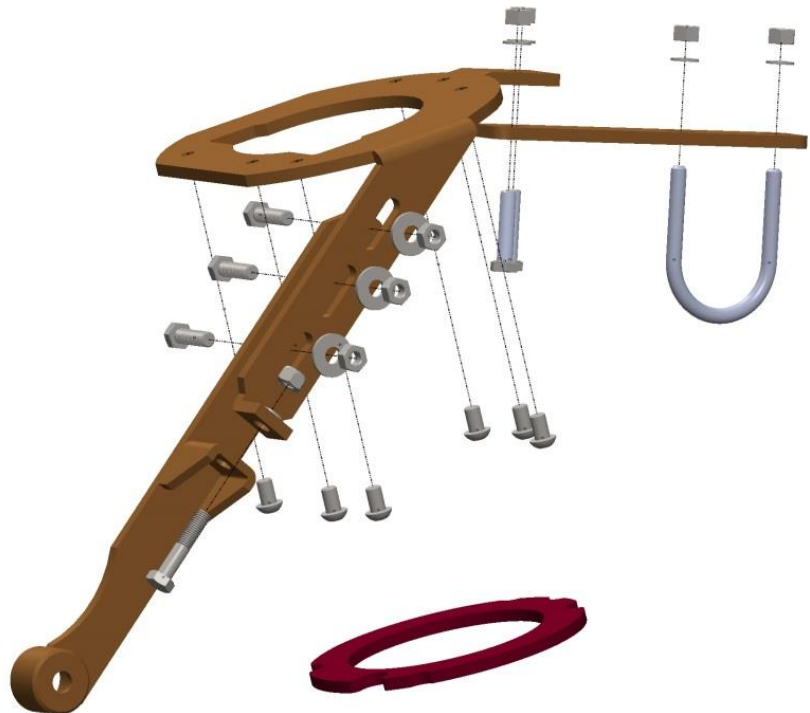


Figure 2B: Correctly Fitted Brake line cover

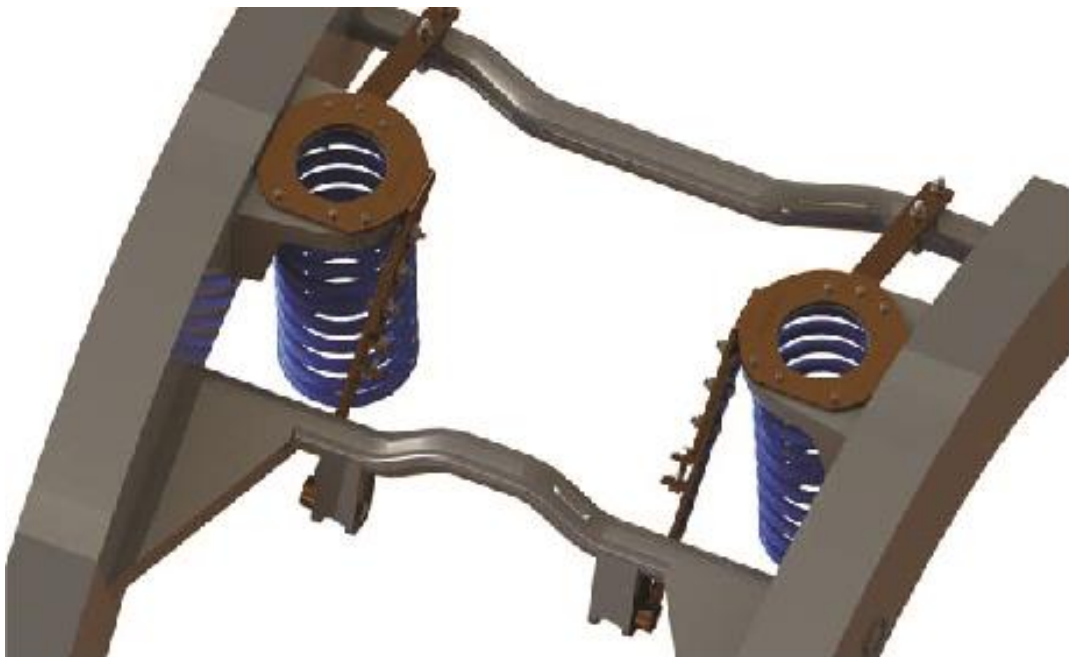
FIGURE 1: DRIVERS SIDE ASSEMBLY – EXPLODED VIEW



INSTALLATION INSTRUCTIONS



FIGURE 1: CORRECTLY FITTED COIL BRACE DRIVER-SIDE



INSTALLATION INSTRUCTIONS

FIGURE 2: CORRECTLY FITTED COIL TOWER BRACE



FIGURE 3: MOUNTING OF COIL BRACE