

INSTALLATION INSTRUCTIONS

PART DESCRIPTION:

PART LISTING

ITEM#	PART#	QUANTITY	DESCRIPTION
1		2	DROP BOXES
2		2	STEEL BOSS
3		2	M16X75X2.0 BOLTS
4		2	M16X2.0 NYLOCK/CONELock NUTS

NOTES: Read and understand these installation instructions before beginning the installation process. Retain these installation instructions for future reference. It is recommended that this item is to be installed by a qualified person.

CAUTION

Please ensure all bolts are tightened to correct torque setting. Recheck in 500km.
 Before fitting have the vehicle on a level surface with the wheels chocked, Failure to do so may cause injury or death.

Size	Torque (Nm)	Torque (ft-lb)
M12	85	64
M14	135	96

CAUTION

It is common for the cross-member bolts to be rusty; if they are rusty it is recommended to replace them with new bolts.



INSTALLATION INSTRUCTIONS

NOTE: working on one side at a time can in some cases make installation easier.

1. Support the crossmember with a suitable lifting aid.
2. Remove the tie rod and radius arms as per the vehicle's service manual.
3. Unbolt the crossmember from the chassis and lower down enough to allow the drop box plate to slide into place.
4. Refit the crossmember bolts loosely. As seen in figure 1.
5. Fit the supplied boss through the OE mount position for the radius arm. The steel boss will go through the rear of the chassis and butt up against the drop box. (As seen in figure 2)
6. Fit the supplied M16x75 bolts through the drop box and the steel boss with the M16 Nylock nut on the back. (As seen in figure 20).
7. It is important to tighten the horizontal bolt that tightens the steel boss to the chassis, this ensures the correct wheelbase. Tighten the vertical cross member bolts.
8. Tighten all the bolts and nuts to the correct torque settings. **NOTE: Use 263 Loctite on all bolts.**
9. Refit the radius arm following the vehicle's service manual. **NOTE:** The rear of the radius arm will now locate in the drop box instead of the OE location.

INSTALLATION INSTRUCTIONS

PHOTOS FOR REFERENCE



FIGURE 1: FITTING OF THE DROP BOX

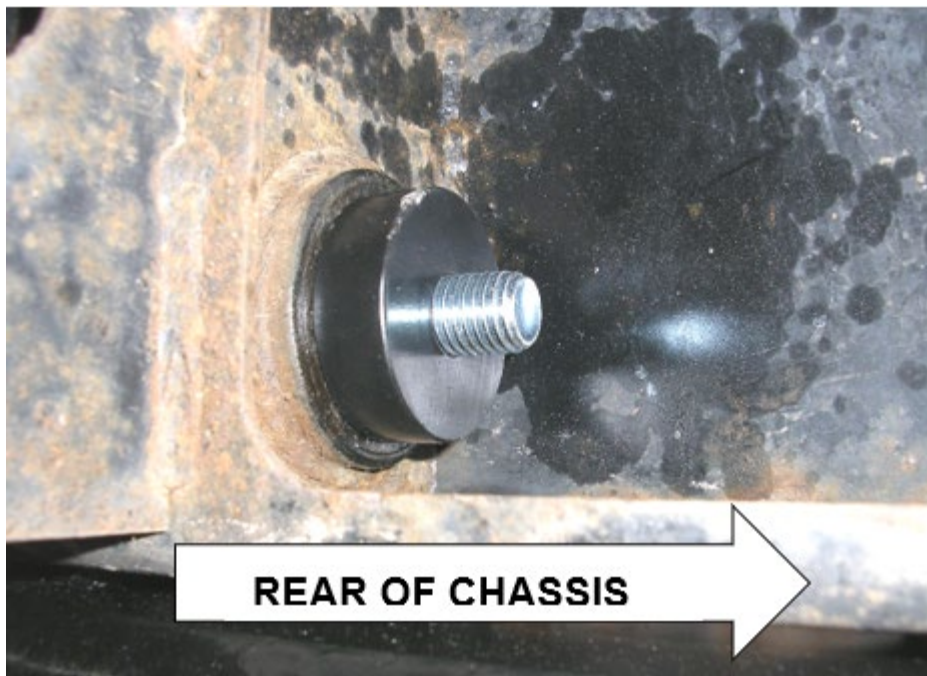


FIGURE 2: FITTING OF STEEL BOSS