

# Superior Engineering PART LISTING

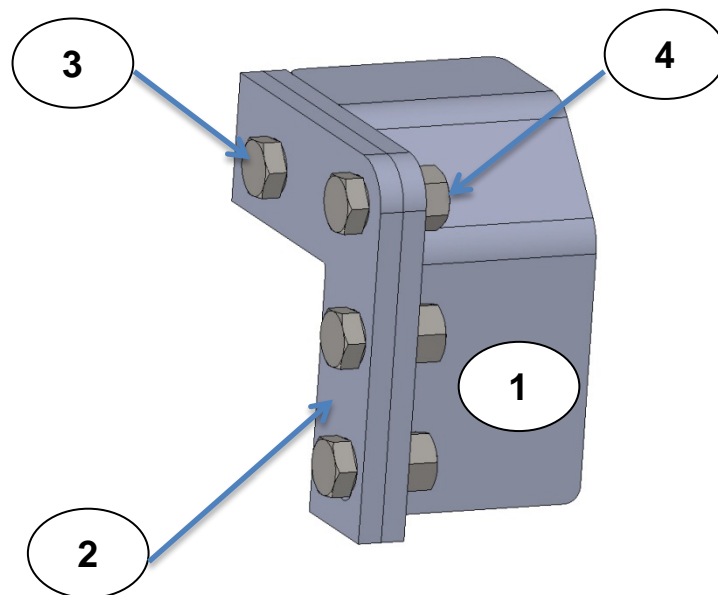
*Superior*  
**ENGINEERING.COM.AU**  
PREMIUM 4X4 ACCESSORIES  
499 Uhlmann Rd  
Burpengary QLD 4505  
Australia

**WEB I.D. –**

ITEM#	PART#	QUANTITY	DESCRIPTION
1		2	MAIN LONG ARM SLIDER PLATE
2		2	LONG ARM SLIDER PLATE MOUNT
3		8	M12 X 1.5 X 30mm BOLT
4		8	M12X1.5 NYLOCK NUT
5		8	M12 FLAT WASHER

**NOTES:**

- Approximate installation time: 1 HOUR
- Ensure all parts have been received correctly.
- Ensure parts are suitable for the vehicle prior to undertaking the insulation.



# Superior Engineering Installation Instructions

*Superior*  
ENGINEERING.COM.AU  
PREMIUM 4X4 ACCESSORIES

499 Uhlmann Rd  
Burpengary QLD 4505  
Australia

**Part Description: Nissan Patrol Long Arm Slider Mount**  
**Part Number:**

**NOTE: Read and understand these Installation Instructions before beginning the installation process. Retain these installation Instructions for future reference.**

**It is recommended this item is installed by a Qualified Person.**

## CAUTION

**Please ensure all bolts are tightened to correct torque setting. Recheck in 500km**

Size	Torque (Nm)	Torque (ft-lb)
M12	85	64

1. Chock the vehicles front and rear wheels with the vehicle in gear and handbrake on.
2. Hold the long arm slider mount into position and see if the old slider mount pipe will line up with the long arm slider plate if so mark out the pipe where to cut. If the mount does not line up measure the length of pipe needed, check the opposite side then cut lengths to suit.
3. Remove sliders off the vehicle.
4. Cut the old mount off the slider then cut the pipe back to suit the long arm slider mount or cut fully off depending on the modification needed.
5. Place item 2 in place on the already fitted superior long arm mount. Make sure the 3 bolt holes are towards the outside of the vehicle and the plate is flush with the long arm mount then weld in place. (Make sure to remove the front of the long arm so there is no heat going into the bush. Re fit when cool to touch)
6. Coat the long arm mount in a rust preventive paint. Then mount the long arm slider plate (Item 1) to the plate using the M12 bolts, nylock nuts and flat washers supplied.
7. Remove the paint on the slider where the new mounting pipe will go (if needed). Bolt the sliders back into position.
8. Fit the pre-cut pipes in between the slider and the long arm slider mount. Then tack weld into position. If the original pipe didn't need to be moved, tack the cut end to the long arm slider mount.
9. Double check the slider and mount are in the correct position E.g. make sure the doors still open and there is working clearance between the body and the slider.
10. Then fully weld the slider and mount.
11. Remove the slider and paint in rust prevention paint or powder coat, then refit to vehicle making sure all bolts are tighten to correct torque settings.

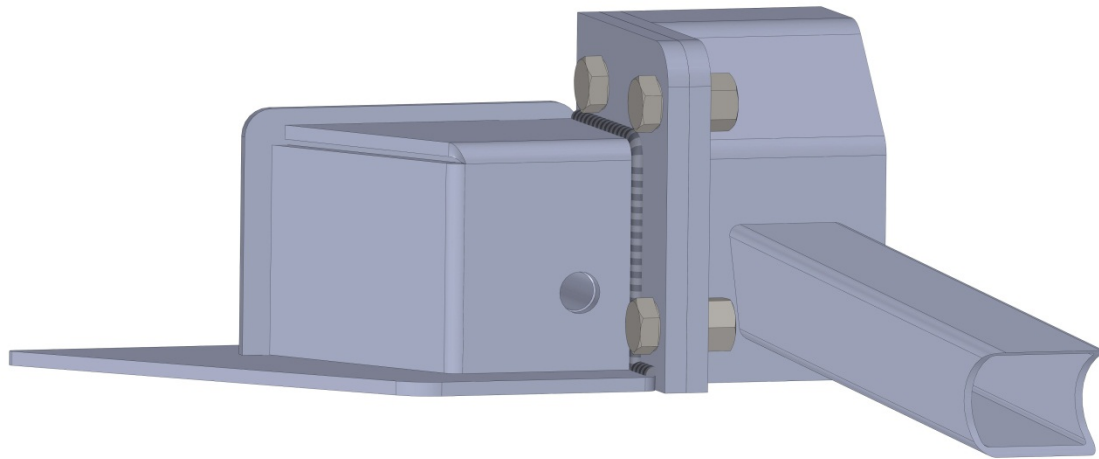


Figure 1: Long Arm Slider Mount 3D Model.



Figure 2: Correctly Fitted Long Arm Slider Mount.



**Figure 3: Correctly Fitted Long Arm Slider Mount Front Shot.**



**Figure 4: Correctly Fitted Long Arm Slider Mount Rear Shot.**