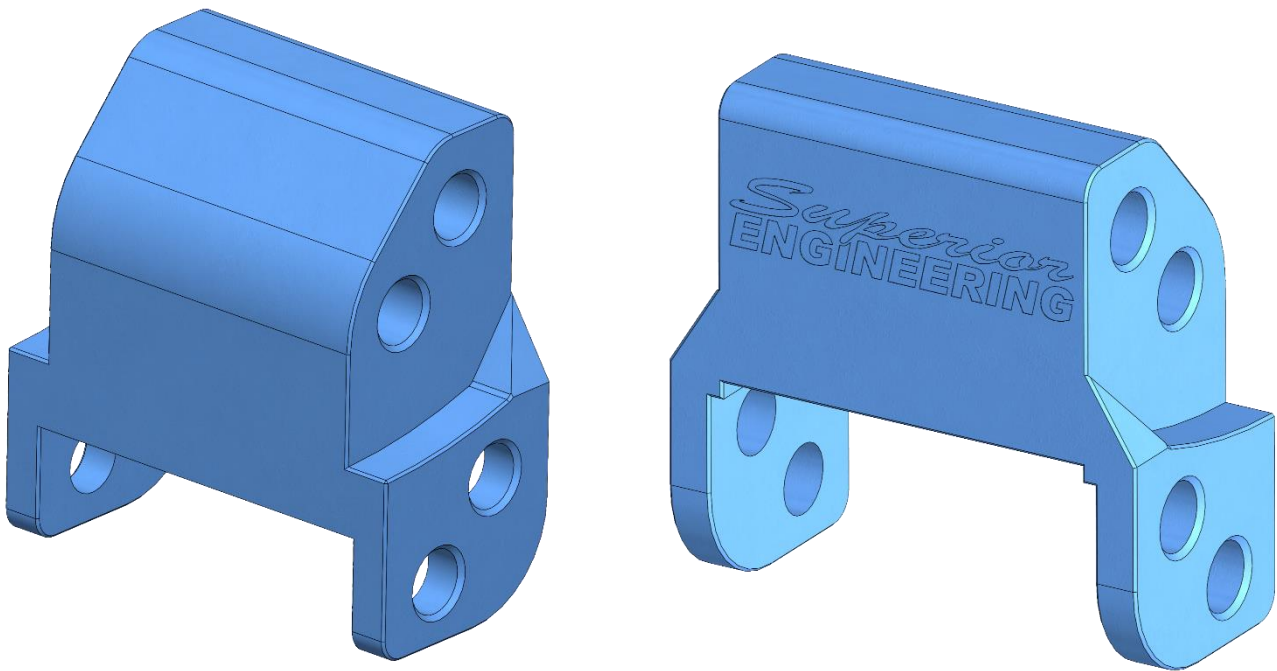


INSTALLATION INSTRUCTIONS



CRCP-B-JIM02

Superior Billet Series 6061 - T6 Alloy Crossmember Drop Kit Suitable For Suzuki Jimny 2018 on



CRCP-B-JIM02_INST_SEV001

INSTALLATION INSTRUCTIONS

IMPORTANT

Please read and understand these installation instructions before beginning the installation process. Retain these installation instructions for future reference. It is recommended that this item be installed by a qualified person(s) with sound knowledge of 4x4 Steering & Suspension Geometry and/or 4x4 Accessories.

If you are unsure about any of the following steps, please contact Superior Engineering's Sales Team – (07) 5433 1411

WARNINGS

- Estimated installation time: 1 Hour(s)
- The following steps are the installer's responsibility.
- Ensure all parts have been received correctly and are suitable for the intended vehicle before undertaking any installation.
- Ensure sure all fasteners are tightened to the advised torque settings and 262 Loctite is used on all threads unless otherwise specified.
- Recheck all fasteners within 500Kms of installation, and at every service interval thereafter.
- This product must be installed as per these instructions, only using the hardware supplied by Superior Engineering unless given prior written consent from Superior Engineering.
- This product is not to be fitted differently or modified in any way other than specified by Superior Engineering.
- This product is not to be used on any other vehicle than those specified by Superior Engineering.
- Once the product has been installed ensure all OE and Aftermarket components within proximity of the installed Superior Engineering component clear through the full range of your vehicle's Steering & Suspension movement.

CRCP-B-JIM02

Superior Billet Series 6061 - T6 Alloy Crossmember Drop Kit Suitable For Suzuki Jimny 2018 on



CRCP-B-JIM02_INST_SEV001

INSTALLATION INSTRUCTIONS

PART(S) CHECKLIST		
DESCRIPTION	QTY	IMAGE
Superior Billet Series 6061 - T6 Alloy Crossmember Drop Kit	1	
Superior Billet Series 6061 - T6 Alloy Crossmember Drop Kit – Bolt Kit 4x M10 x 1.5 x 110mm Hex Head Bolt 4x M10 Nyloc Nut 8x M10 Flat Washer	1	

TORQUE SETTINGS

SIZE	TORQUE (Nm)	TORQUE (lb.ft)
M10	49	36

CAUTION

Ensure all bolts are tightened to the correct torque setting with 262 Loctite. Re-check in 500km and at every service interval thereafter

CRCP-B-JIM02

Superior Billet Series 6061 - T6 Alloy Crossmember Drop Kit Suitable For Suzuki Jimny 2018 on



CRCP-B-JIM02_INST_SEV001

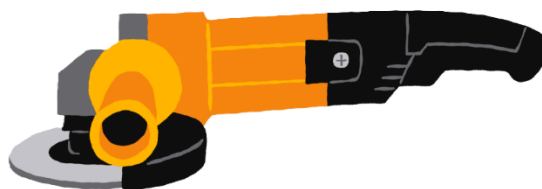
INSTALLATION INSTRUCTIONS

INSTALLATION STEPS

1. Park the vehicle on a level surface and ensure it is secure. Alternatively, position the vehicle securely on a hoist, using the manufacturer's designated lifting points.
2. Review the kit's components and confirm that all parts are supplied. *Refer to the above parts checklist*
3. Locate the crossmember positioned between the two front radius arm chassis mounts and remove it. *Retain the Four OE bolts and nuts. Refer Figure 1*
4. With the Crossmember on a bench, mark both the outer edges as these will need to cut to clear the new brackets. *Refer Figure 2*

WARNING

Safety is solely the responsibility of the operator; Angle Grinders should only be used by competent operators. Superior Engineering recommends a suitable face shield be worn in addition to safety glasses and ear protection when operating an Angle Grinder.



5. Using an Angle Grinder, cut both outer edges of the crossmember and remove the material as marked out in *Step 4. Refer Figure 3*
6. Test fit the Superior Engineering Crossmember Drop Bracket to the modified Crossmember, checking you have removed enough material for correct fitment. If not, a suitable grinding or sanding disc may be used to slowly remove any additional material required.
7. Once the clearance is sufficient on the Crossmember Drop Bracket to the modified Crossmember, coat the modified Crossmember in Primer and Paint to seal all raw surfaces. *Follow the directions from the paint manufacture regarding application and dry times.*
8. Utilising the OEM Crossmember bolts, install the Superior Engineering Crossmember Drop Brackets to the chassis. Making sure the Superior Engineering Logo is facing outwards. *Leave the Bolts and Nuts finger tight. Refer Figure 4*
9. Lift the modified Crossmember into place, ensuring the drain holes are facing towards the rear of the vehicle. Secure this to the Superior Engineering Crossmember Drop Brackets with the supplied 4x M10Bolts, 8x M10 Flat Washers (*On either side of the mount*), and 4x M10 Nyloc Nuts. *Refer Figure 5*
10. Tighten the OEM Crossmember hardware to the Manufacturer's specifications and the Superior Engineering Crossmember Drop Bracket Bolts to the torque specifications outlined above.
11. Conduct a test drive, checking for any unusual noises and monitor the Tailshaft clearance. If any issues arise, inspect the installation and address any concerns. *Refer Figures 6 final fitment examples*

CRCP-B-JIM02

Superior Billet Series 6061 - T6 Alloy Crossmember Drop Kit Suitable For Suzuki Jimny 2018 on



CRCP-B-JIM02_INST_SEV001

INSTALLATION INSTRUCTIONS

REFERENCE IMAGES

FIGURE 1



FIGURE 2

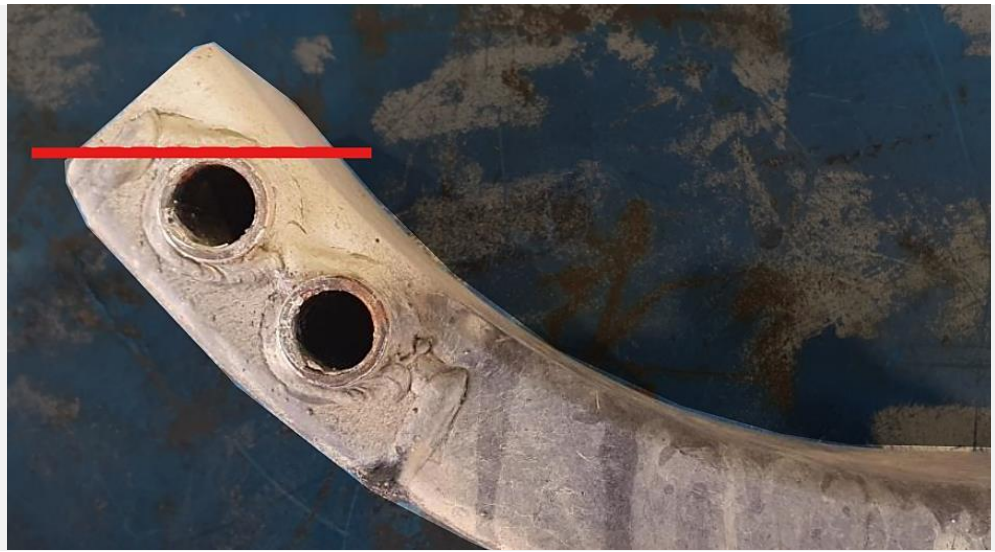


FIGURE 3



CRCP-B-JIM02

Superior Billet Series 6061 - T6 Alloy Crossmember Drop Kit Suitable For Suzuki Jimny 2018 on



CRCP-B-JIM02_INST_SEV001

INSTALLATION INSTRUCTIONS

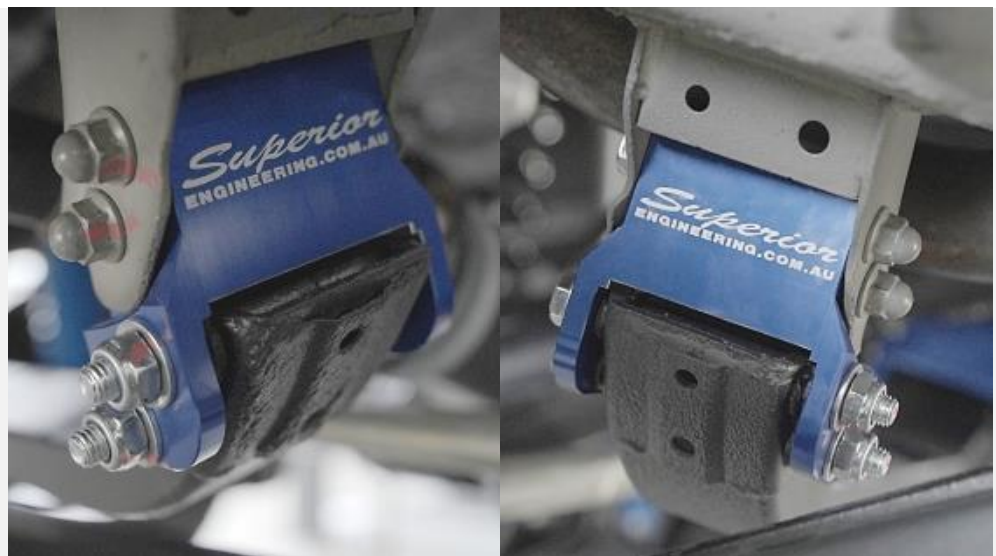
FIGURE 4



FIGURE 5



FIGURE 6



CONTACT DETAILS

Superior Engineering
8 Chrome Court, Burpengary
4505 QLD Australia
(07) 5433 1411
sales@superiorengineering.com.au

CRCP-B-JIM02

Superior Billet Series 6061 - T6 Alloy Crossmember Drop Kit Suitable For Suzuki Jimny 2018 on



CRCP-B-JIM02_INST_SEV001