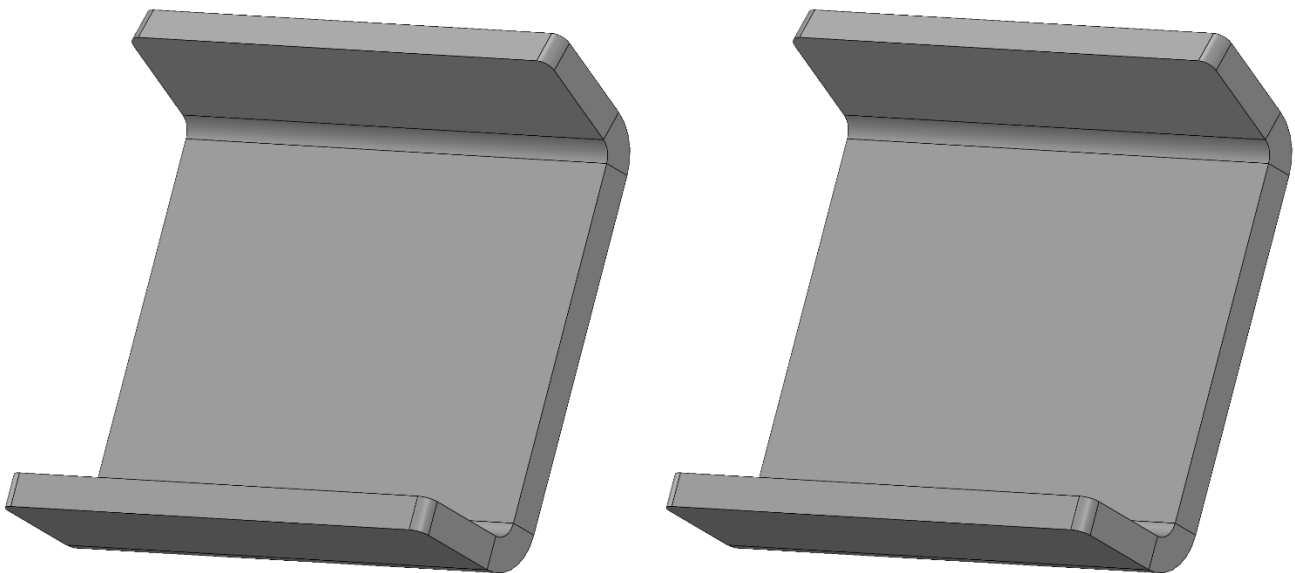


INSTALLATION INSTRUCTIONS



MAN-CRPL-A-HLX11

*Superior Radiator Support Crossmember Chop Filler Plate (Front) Suitable For
Toyota Hilux Vigo / Revo 03/2005 - Current (Pair)*



MAN-CRPL-A-HLX11_INST_SEV001

INSTALLATION INSTRUCTIONS

IMPORTANT

Please read and understand these installation instructions before beginning the installation process. Retain these installation instructions for future reference. It is recommended that this item be installed by a qualified person(s) with sound knowledge of 4x4 Steering & Suspension Geometry and/or 4x4 Accessories.

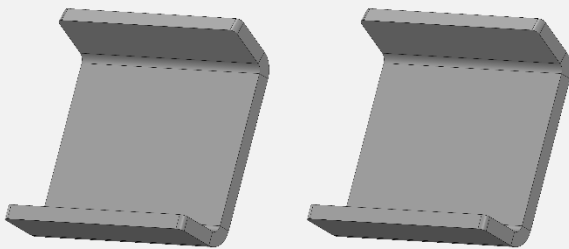
Due to regulatory variations throughout Australia, it is recommended that prior to fitment of this part being carried out, confirmation from your local/ state transport authority needs to be obtained as to the correct welding procedure required for approval. Superior Engineering recommends that the minimum welding requirement must meet or exceed Australian Standard AS 1554 Structural steel welding. In general, for approval purposes, this part needs to be fitted by a certified or trade qualified welder who has performed and understands the correct welding procedure that is required and can supply required certification or paperwork as deemed.

If you are unsure about any of the following steps, please contact Superior Engineering's Sales Team
– (07) 5433 1411

WARNINGS

- Estimated installation time: 4 Hour(s)
- The following steps are the installer's responsibility.
- Ensure all parts have been received correctly and are suitable for the intended vehicle before undertaking any installation.
- Ensure sure all fasteners are tightened to the advised torque settings and 262 Loctite is used on all threads unless otherwise specified.
- Recheck all fasteners within 500Kms of installation, and at every service interval thereafter.
- This product must be installed as per these instructions, only using the hardware supplied by Superior Engineering unless given prior written consent from Superior Engineering.
- This product is not to be fitted differently or modified in any way other than specified by Superior Engineering.
- This product is not to be used on any other vehicle than those specified by Superior Engineering.
- Once the product has been installed ensure all OE and Aftermarket components within proximity of the installed Superior Engineering component clear through the full range of your vehicle's Steering & Suspension movement.

PART(S) CHECKLIST

DESCRIPTION	QTY	IMAGE
Superior Radiator Support Crossmember Chop Filler Plate (Front)	2	

MAN-CRPL-A-HLX11

Superior Radiator Support Crossmember Chop Filler Plate (Front) Suitable For
Toyota Hilux Vigo / Revo 03/2005 - Current (Pair)



MAN-CRPL-A-HLX11_INST_SEV001

INSTALLATION INSTRUCTIONS

CAUTION

Ensure all bolts are tightened to the correct torque setting with 262 Loctite. Re-check in 500km and at every service interval thereafter

INSTALLATION STEPS

1. Park the vehicle on a level surface and ensure it is secure. Alternatively, position the vehicle securely on a hoist, using the manufacturer's designated lifting points.
2. Review the kit's components and confirm that all parts are supplied. *Refer to the above parts checklist*
3. Following the manufacturer's workshop manual, remove the OEM front under guards from the vehicle providing access to the 2 front radiator support brackets. *If an aftermarket Under guard is installed, refer to the specific instructions provided by its manufacturer for removal.*
4. Remove both front radiator support brackets from the vehicle. *Refer to Figure 1*
5. Using a Ruler mark and measure 150mm (REVO) 125mm (VIGO) from the rear of the radiator bracket. *Refer to Figure 2*
6. Using the previous mark as a guide, place the Filler Plate inline on the radiator support bracket and trace around it. *Note that the Filler Plate is directional with the 90-degree bend towards the rear of the support bracket. Refer to Figures 3 and 4*
7. Following inside the traced lines, cut, remove, and clean this section from the support bracket. *Check fitment of the Filler plate as you go, clearance sections where needed. Refer to Figures 5 and 6*
8. Once the Filler plate fits into the support bracket correctly, clean it with Acetone or Brake Cleaner to remove the anti-rust coating. *Refer to Figure 7*
9. Clamp the support bracket and Filler plate in place, so it doesn't move during welding. *Ensure that the Filler Plate is positioned with the 90-degree bend towards the rear of the support bracket Refer to Figure 8*
10. Tack and weld in the Filler plate onto the support bracket, aiming to balance the thermally induced stresses so the support bracket doesn't warp or distort. *Refer to Figure 9*
11. Once the brackets have cooled, clean the whole assembly with a wax and grease remover.
12. Apply Primer and Paint to prevent rust. *Follow the directions from the paint manufacture regarding application and dry times.*
13. After the support brackets have completed dried, install them back into the vehicle by repeating the removal process in reverse order.
14. Check over and torque all components to the manufacturer's specifications.
15. Conduct a test drive, checking for any unusual noises and the swaybar clearance. If any issues arise, re-read the installation instructions and address any concerns. *Refer Figures 10 and 11 for final fitment examples*

MAN-CRPL-A-HLX11

Superior Radiator Support Crossmember Chop Filler Plate (Front) Suitable For Toyota Hilux Vigo / Revo 03/2005 - Current (Pair)



INSTALLATION INSTRUCTIONS

REFERENCE IMAGES

FIGURE 1



FIGURE 2

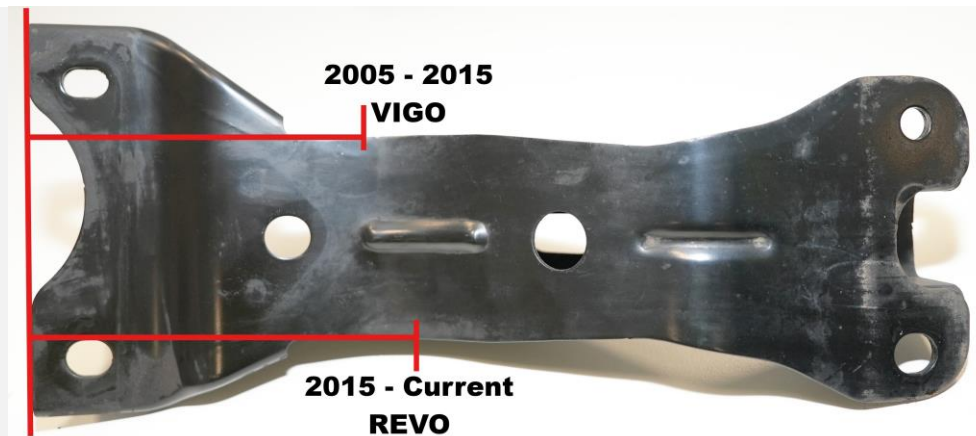


FIGURE 3



FIGURE 4



MAN-CRPL-A-HLX11

Superior Radiator Support Crossmember Chop Filler Plate (Front) Suitable For Toyota Hilux Vigo / Revo 03/2005 - Current (Pair)



MAN-CRPL-A-HLX11_INST_SEV001

INSTALLATION INSTRUCTIONS

FIGURE 5



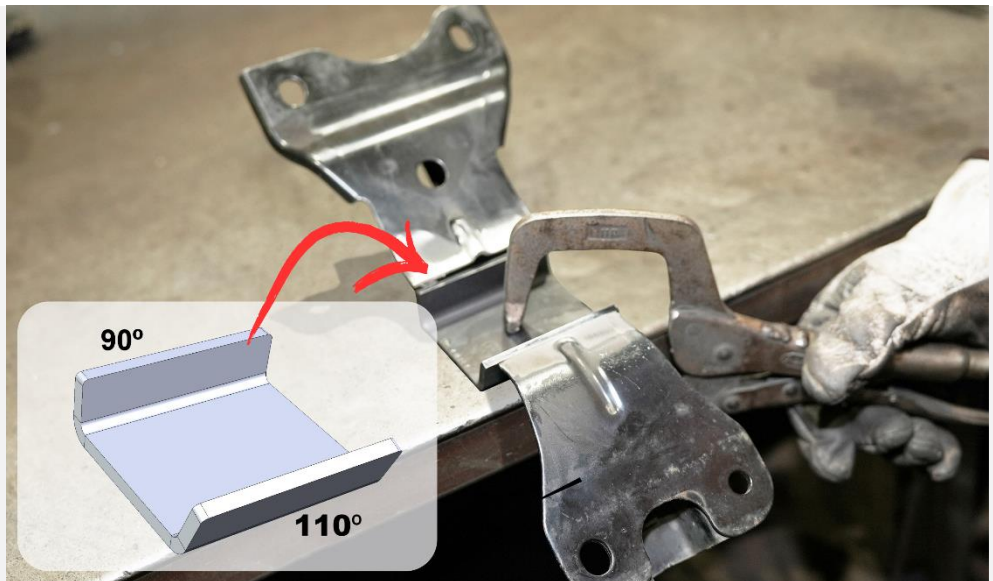
FIGURE 6



FIGURE 7



FIGURE 8



MAN-CRPL-A-HLX11

Superior Radiator Support Crossmember Chop Filler Plate (Front) Suitable For
Toyota Hilux Vigo / Revo 03/2005 - Current (Pair)

Superior
ENGINEERING
PREMIUM 4x4 ACCESSORIES

MAN-CRPL-A-HLX11_INST_SEV001

INSTALLATION INSTRUCTIONS

FIGURE 9



FIGURE 10



FIGURE 11



CONTACT DETAILS

Superior Engineering

8 Chrome Court, Burpengary
4505 QLD Australia

(07) 5433 1411

sales@superiorengineering.com.au

MAN-CRPL-A-HLX11

**Superior Radiator Support Crossmember Chop Filler Plate (Front) Suitable For
Toyota Hilux Vigo / Revo 03/2005 - Current (Pair)**



MAN-CRPL-A-HLX11_INST_SEV001