

Superior **ENGINEERING** PREMIUM 4x4 ACCESSORIES



PRAD-B-JIM02

Superior Panhard Rod Adjustable Rear Suitable For Suzuki Jimny 05/2018 on – Installation Instructions

IMPORTANT


Please read and understand these installation instructions before beginning the installation process. Retain these installation instructions for future reference. It is recommended that this item be installed by a qualified person(s) with sound knowledge of 4x4 Steering & Suspension Geometry and/or 4x4 Accessories.

If you are unsure about any of the following steps, please contact Superior Engineering's Sales Team – (07) 5433 1411

WARNINGS

- Estimated installation time: 1-2 Hour(s)
- The following steps are the installer's responsibility.
- Ensure all parts have been received correctly and are suitable for the intended vehicle before undertaking any installation.
- Ensure sure all fasteners are tightened to the advised torque settings, and 262 Loctite is used on all threads unless otherwise specified.
- Recheck all fasteners within 500Kms of installation, and at every service interval thereafter.
- This product must be installed as per these instructions, only using the hardware supplied by Superior Engineering unless given prior written consent from Superior Engineering.
- This product is not to be fitted differently or modified in any way other than specified by Superior Engineering.
- This product is not to be used on any other vehicle than those specified by Superior Engineering.
- Once the product has been installed ensure all OE and Aftermarket components within proximity of the installed Superior Engineering component clear through the full range of your vehicle's Steering & Suspension movement.

PART(S) CHECKLIST

| DESCRIPTION | QTY | IMAGE |
|---------------------------------|-----|--|
| Superior Adjustable Panhard Rod | 1 |  |

CAUTION

Ensure all bolts are tightened to the correct torque setting with 262 Loctite. Re-check in 500km and at every service interval thereafter

INSTALLATION STEPS

1. Park the vehicle on a level surface and ensure it is secure. Alternatively, position the vehicle securely on a hoist, using the manufacturer's designated lifting points.
2. Review the kit's components and confirm that all parts are supplied. *Refer to the above parts checklist*
3. Using a Socket or spanner, loosen the bolt at both ends of the Panhard Rod and remove it from the vehicle. Retain the hardware for later use. *Refer Figures 1 and 2*

EXERCISE CAUTION AS THE DIFFERENTIAL HOUSING OR BODY MAY SHIFT TO ONE SIDE ONCE THE BOLTS HAVE BEEN REMOVED!

4. With the old Panhard removed from the vehicle, place it alongside the new adjustable Panhard Rod. Loosen and turn the new Panhard Rod until it matches the length of the OEM Rod if you have 0-40mm lift. *Refer Figure 3*
5. Install the Panhard Rod into the factory mounts with the internally threaded section located on the driver (right) side, Reusing the OE bolts on the driver (right) and passenger (left) side. *Refer Figures 4 and 5*
6. If your vehicle has a lift exceeding 40mm, you'll need to fine-tune this adjustment. With the vehicle on level ground, grab a tape measure or ruler and measure the distance between a fixed point on the chassis and the edge of the Rim.
7. With the Panhard Rod correctly aligned, tighten the 2 Locking nuts on the Panhard Rod.
8. Once the vehicle is on the ground tighten the mounting bolts to the torque settings outlined in the vehicles workshop manual.

WE SUGGEST GETTING A WHEEL ALIGNMENT AFTER INSTALLATION, THIS WILL ENSURE ALL COMPONENTS ARE CALIBRATED TOGETHER

9. Conduct a test drive, checking that the vehicle handles and drives correctly. If any issues arise, inspect the installation and address any concerns. *Refer Figures 6, 7 and 8 for final fitment examples*

REFERENCE IMAGES

FIGURE 1



FIGURE 2

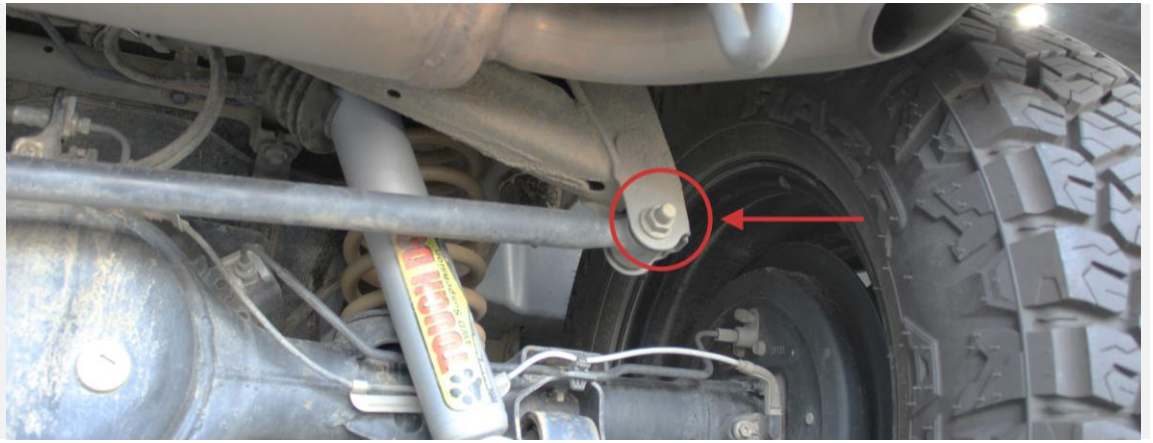


FIGURE 3

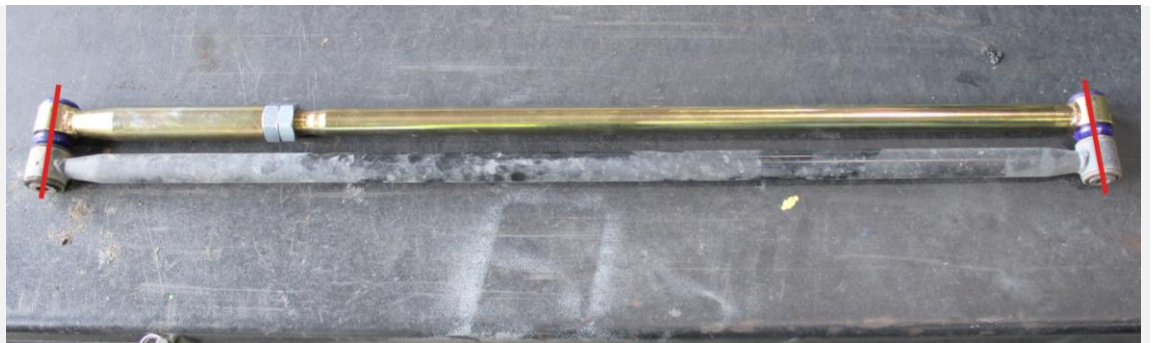


FIGURE 4

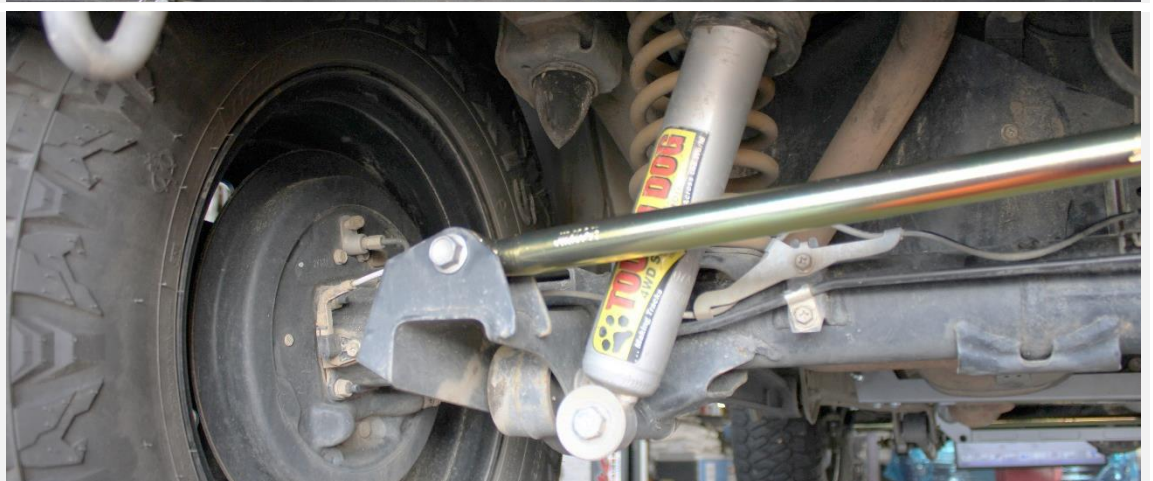


FIGURE 5



PRAD-B-JIM02

Superior Panhard Rod Adjustable Rear Suitable For Suzuki Jimny 05/2018 on – Installation Instructions

FIGURE 6



FIGURE 7



FIGURE 8



PRAD-B-JIM02

Superior Panhard Rod Adjustable Rear Suitable For Suzuki Jimny 05/2018 on – Installation Instructions

CONTACT DETAILS

Superior Engineering
8 Chrome Court, Burpengary
4505 QLD Australia

(07) 5433 1411
sales@superiorengineering.com.au