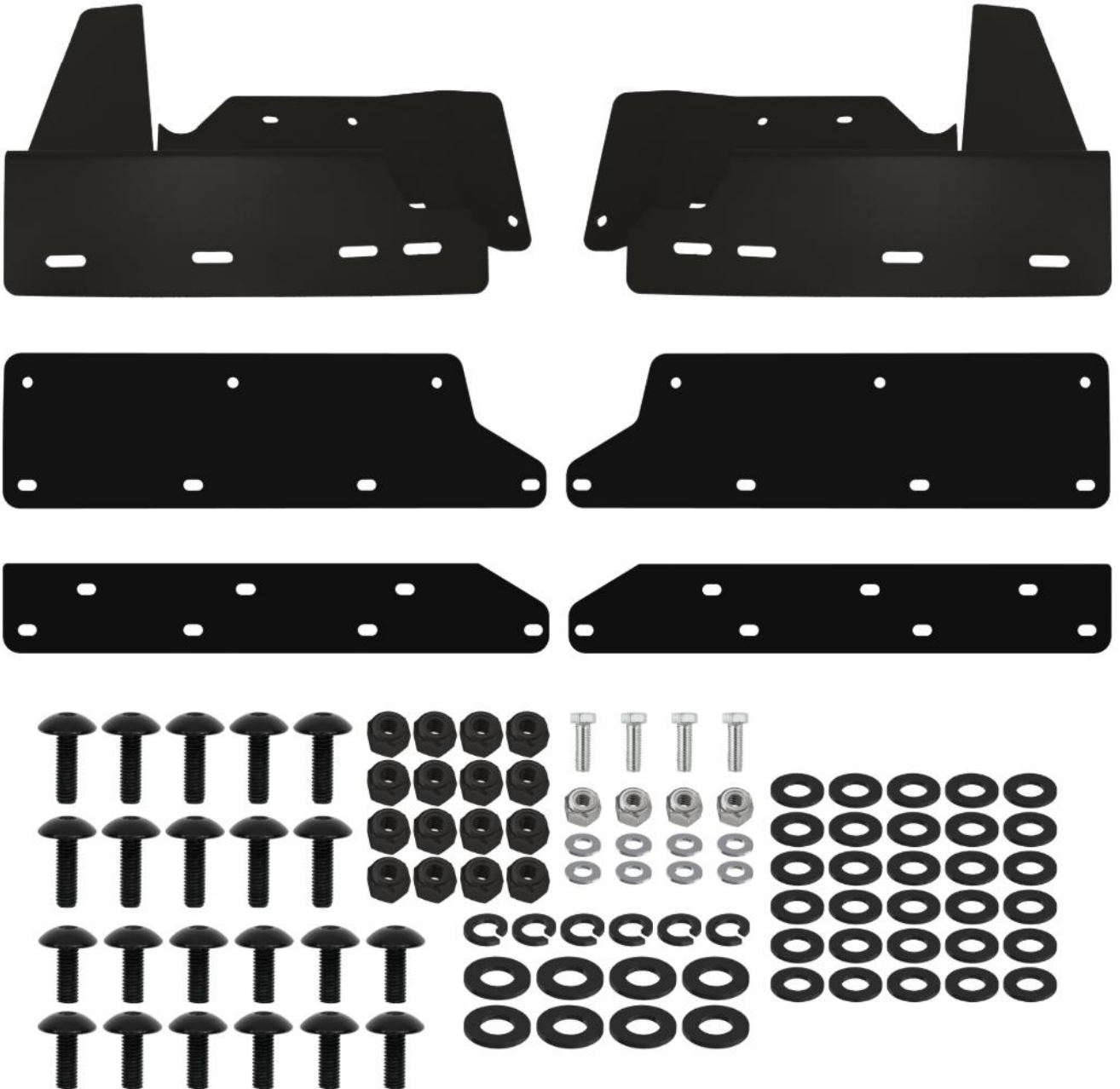


Superior ENGINEERING

PREMIUM 4x4 ACCESSORIES



MFBK-B-GLD01

Superior Mudflap Brackets Suitable for Jeep Gladiator Rubicon 2020 On Front – Installation Instructions

IMPORTANT

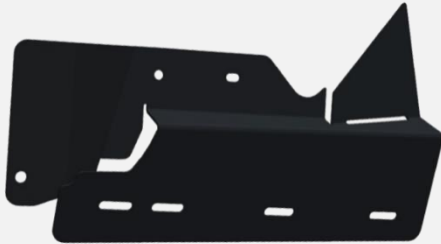

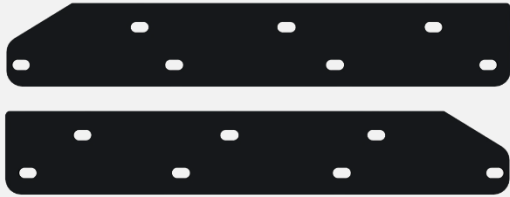
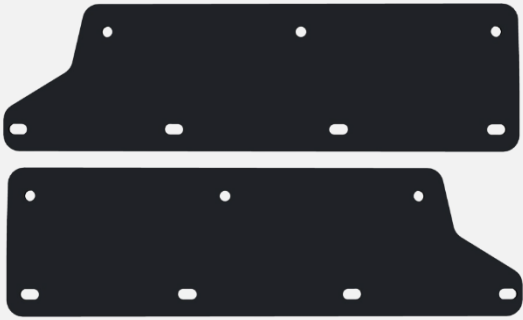

Please read and understand these installation instructions before beginning the installation process. Retain these installation instructions for future reference. It is recommended that this item be installed by a qualified person(s) with sound knowledge of 4x4 Steering & Suspension Geometry and/or 4x4 Accessories.

If you are unsure about any of the following steps, please contact Superior Engineering's Sales Team – (07) 5433 1411

WARNINGS

- Estimated installation time: 1-2 Hour(s)
- The following steps are the installer's responsibility.
- Ensure all parts have been received correctly and are suitable for the intended vehicle before undertaking any installation.
- Ensure sure all fasteners are tightened to the advised torque settings, and 262 Loctite is used on all threads unless otherwise specified.
- Recheck all fasteners within 500Kms of installation, and at every service interval thereafter.
- This product must be installed as per these instructions, only using the hardware supplied by Superior Engineering unless given prior written consent from Superior Engineering.
- This product is not to be fitted differently or modified in any way other than specified by Superior Engineering.
- This product is not to be used on any other vehicle than those specified by Superior Engineering.
- Once the product has been installed ensure all OE and Aftermarket components within proximity of the installed Superior Engineering component clear through the full range of your vehicle's Steering & Suspension movement.

PART(S) CHECKLIST

DESCRIPTION	QTY	IMAGE
Mudflap Bracket – Driver (Right) Side	1	
Mudflap Bracket – Passenger (Left) Side	1	
Mudflap Extension Bracket (Standard)	2	
Mudflap Extension Bracket – Passenger and Driver Side (Left and Right)	2	
<p>Superior Mudflap Bracket – Bolt Kit</p> <p>4x M5 x 0.8 Nyloc Nut 4x M5 x 0.8 x 25 Hex Head Bolt 8x M5 x 10 x 1.0 Plain Washer 10x M6 x 1.0 x 20mm Hex Head Bolt (Black) 12x M6 x 1.0 x 15mm Hex Head Bolt (Black) 16x M6 x 1.0 Nyloc Nut (Black) 8x M6 x 25 x 1.5 Plain Washer (Black) 30x M6 x 16 x 1.5 Plain Washer (Black) 6x M6 Spring Washer (Black)</p>	1	

TORQUE SETTINGS

SIZE	TORQUE (Nm)	TORQUE (lb.ft)
M6	13	10

CAUTION

Ensure all bolts are tightened to the correct torque setting with 262 Loctite. Re-check in 500km and at every service interval thereafter

MFBK-B-GLD01

CAUTION

The hardware supplied in this mudflap bracket kit is made from aluminium. Do not overtighten during installation, as excessive torque may cause damage to the components. Tighten only until the fittings are firm and secure.

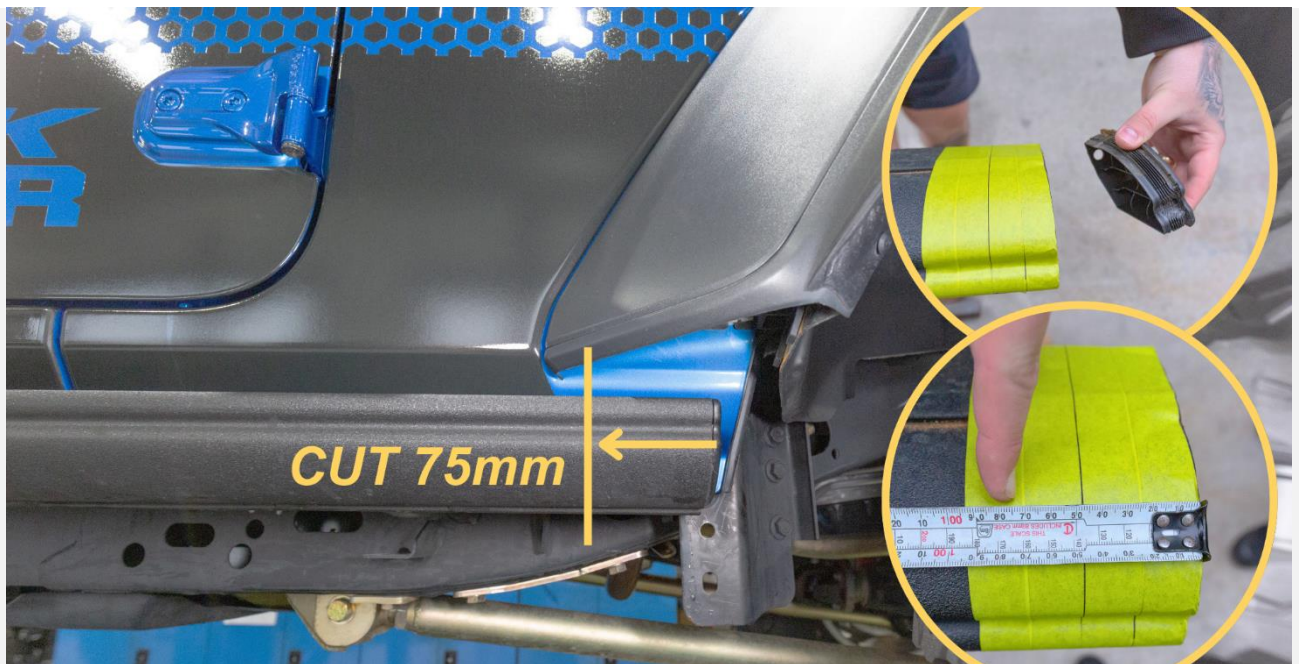
INSTALLATION STEPS

STEP 1
Park the vehicle on a level surface and ensure it is secure. Alternatively, position the vehicle securely on a hoist, using the manufacturer's designated lifting points.

STEP 2
Review the kit's components and confirm that all parts are supplied. *Refer to the above parts checklist*

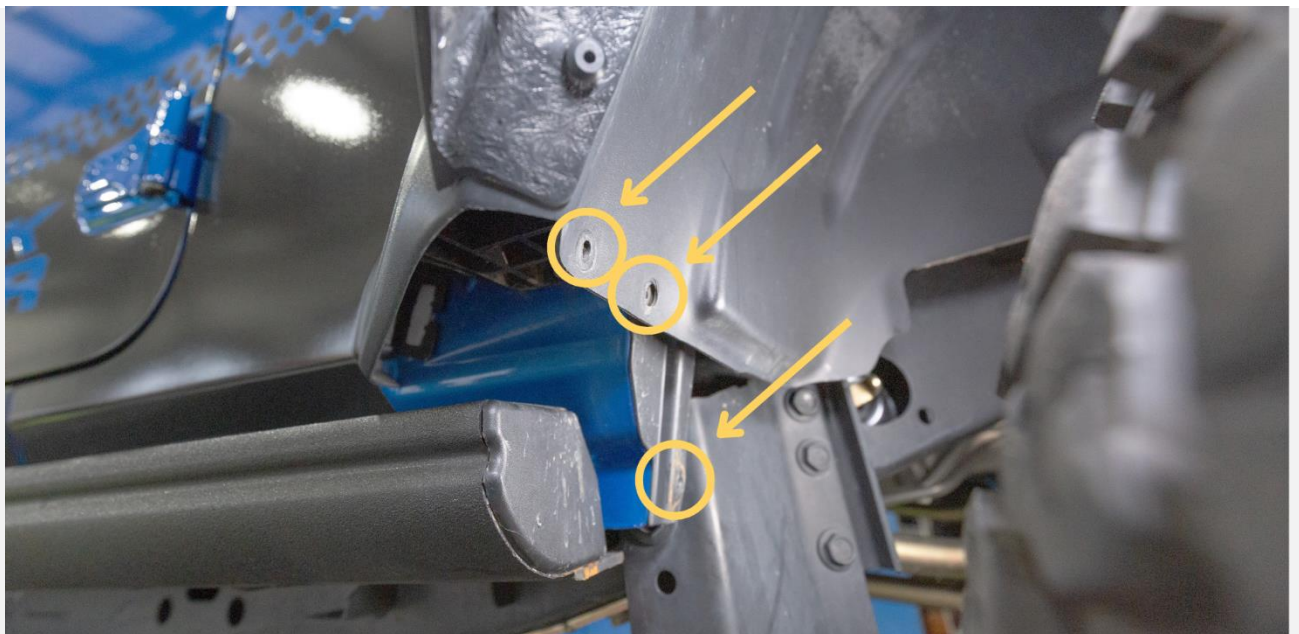
Following the vehicles workshop manual, remove the sidesteps fitted on the RUBICON models. Measure 75mm from the FRONT of the sidesteps and cut this section off.

STEP 3



Remove the OEM clips retaining the inner liner circled below.

STEP 4

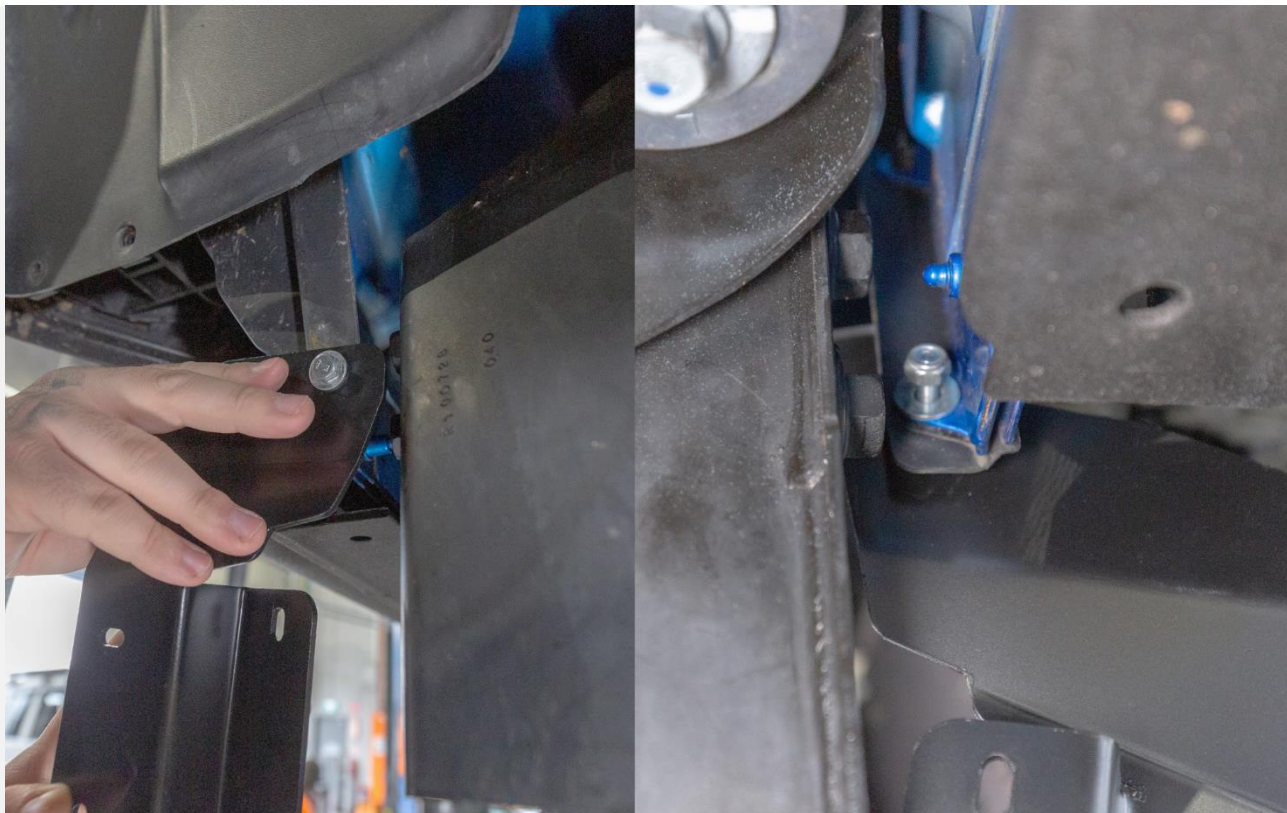


MFBK-B-GLD01

Superior Mudflap Brackets Suitable for Jeep Gladiator Rubicon 2020 On Front – Installation Instructions

Install the *Mudflap Bracket* using the supplied *M6 x 1.0 x 20mm Hex Head Bolt (Black)*, *M6 x 25 x 1.5 Plain Washer (Black)*, and *M6 x 1.0 Nyloc Nut (Black)* to the inner fender clip hole, removed in step 4.

STEP 5



Whilst holding the inner fender liner away from the mounting tabs, slide the *Mudflap Bracket* in between them, lining the OE holes up to the *Mudflap Bracket*.

STEP 6

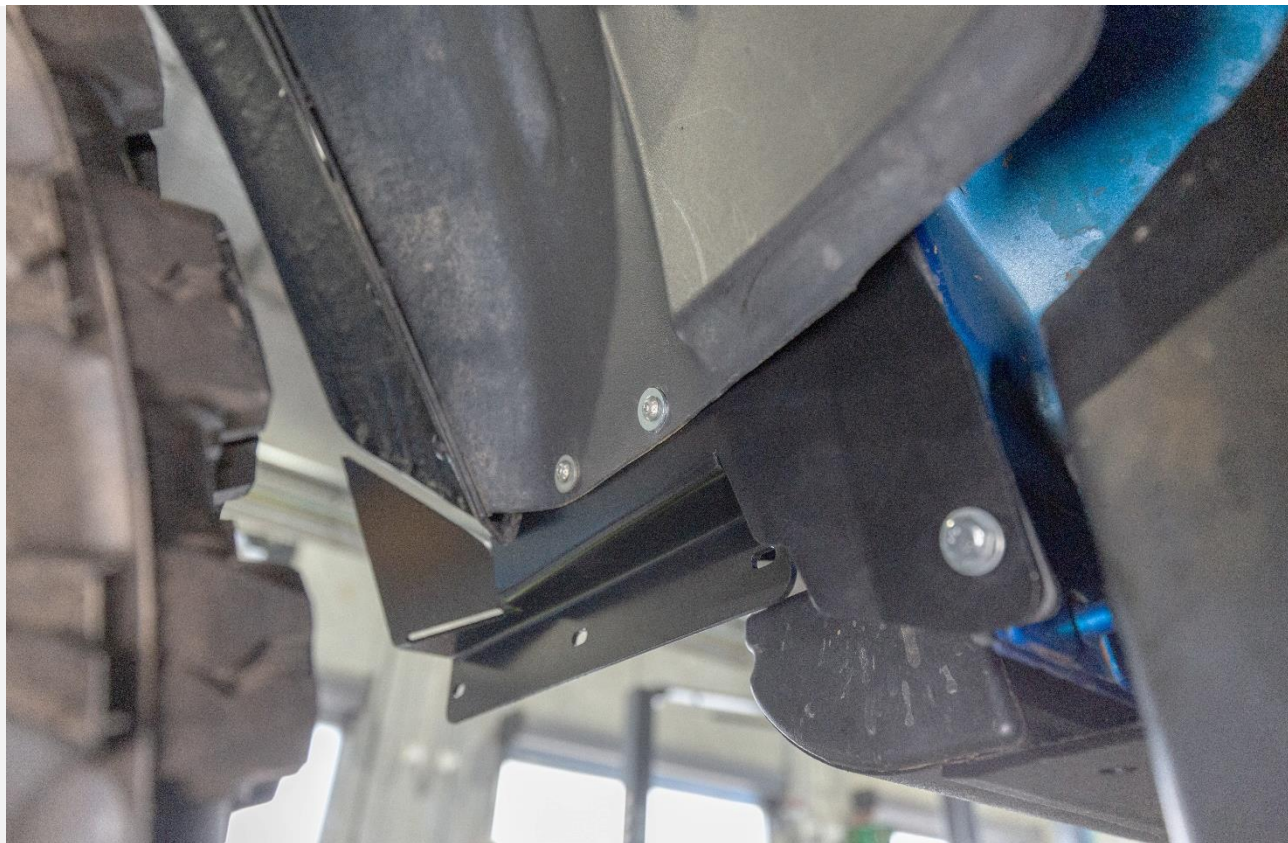


MFBK-B-GLD01

Superior Mudflap Brackets Suitable for Jeep Gladiator Rubicon 2020 On Front – Installation Instructions

STEP 7

Install the supplied *M5 x 0.8 x 25 Hex Head Bolt*, *M5 x 10 x 1.0 Plain Washer*, and *M5 x 0.8 Nyloc Nut* into both mounting holes.



STEP 8

Install your preferred mudflap or mudflap disconnect brackets.



MFBK-B-GLD01

Superior Mudflap Brackets Suitable for Jeep Gladiator Rubicon 2020 On Front – Installation Instructions

Repeat steps 3-8 on the opposite side and check all hardware is tight. Ensure there is sufficient clearance from the tyres. If any issues arise, inspect the installation and address any concerns.

STEP 9



MFBK-B-GLD01

Superior Mudflap Brackets Suitable for Jeep Gladiator Rubicon 2020 On Front – Installation Instructions

CONTACT DETAILS

Superior Engineering
8 Chrome Court, Burpengary
4505 QLD Australia

(07) 5433 1411
sales@superiorengineering.com.au

Superior
ENGINEERING
PREMIUM 4x4 ACCESSORIES
NEED MUDFLAPS?

BUY NOW!



SCAN HERE

