

# Superior ENGINEERING

PREMIUM 4x4 ACCESSORIES



## RESM-D-LCR31

Superior 304 Stainless Steel 2.0/2.5 Shock Reservoir Mount Suitable For Toyota LandCruiser 80/105 Series  
Rear (Pair) – Installation Instructions

## IMPORTANT

Please read and understand these installation instructions before beginning the installation process. Retain these installation instructions for future reference. It is recommended that this item be installed by a qualified person(s) with sound knowledge of 4x4 Steering & Suspension Geometry and/or 4x4 Accessories.

If you are unsure about any of the following steps, please contact Superior Engineering's Sales Team – (07) 5433 1411

## WARNINGS

- Estimated installation time: 1 Hour(s)
- The following steps are the installer's responsibility.
- Ensure all parts have been received correctly and are suitable for the intended vehicle before undertaking any installation.
- Ensure sure all fasteners are tightened to the advised torque settings, and 262 Loctite is used on all threads unless otherwise specified.
- Recheck all fasteners within 500Kms of installation, and at every service interval thereafter.
- This product must be installed as per these instructions, only using the hardware supplied by Superior Engineering unless given prior written consent from Superior Engineering.
- This product is not to be fitted differently or modified in any way other than specified by Superior Engineering.
- This product is not to be used on any other vehicle than those specified by Superior Engineering.
- Once the product has been installed ensure all OE and Aftermarket components within proximity of the installed Superior Engineering component clear through the full range of your vehicle's Steering & Suspension movement.

### **RESM-D-LCR31**

*Superior 304 Stainless Steel 2.0/2.5 Shock Reservoir Mount Suitable For Toyota LandCruiser 80/105 Series Rear (Pair) – Installation Instructions*

## PART(S) CHECKLIST

DESCRIPTION	QTY	IMAGE
304 Stainless Steel 2.0/2.5 Shock Reservoir Mount – Driver (Right) Side Mount	1	
304 Stainless Steel 2.0/2.5 Shock Reservoir Mount – Passenger (Left) Side Mount	1	
304 Stainless Steel 2.0/2.5 Shock Reservoir Mount – Hardware Kit  2x M10 x 1.5 x 20 x 40 x 8mm Threaded Plate	1	
304 Stainless Steel 2.0/2.5 Shock Reservoir Mount – Bolt Kit  2x M10 x 1.25 x 30mm Hex Head Bolt 2x M10 x 1.5 x 25mm Button Head Bolt 2x M10 Spring Washer 2x M10 x 38mm Plain Washer 7x M10 x 22.5mm Plain Washer 2x M10 x 1.25 Nyloc Nut	1	
Superior 2.0 Shock Reservoir Mount Hose Clamp Kit – Hose Clamp 38-63mm	4	
Superior 2.5 Shock Reservoir Mount Hose Clamp Kit – Hose Clamp 65-89mm	4	

## TORQUE SETTINGS

SIZE	TORQUE (Nm)	TORQUE (lb.ft)
M10	49	36

### CAUTION

**Ensure all bolts are tightened to the correct torque setting with 262 Loctite. Re-check in 500km and at every service interval thereafter**

### RESM-D-LCR31

Superior 304 Stainless Steel 2.0/2.5 Shock Reservoir Mount Suitable For Toyota LandCruiser 80/105 Series Rear (Pair) – Installation Instructions

## INSTALLATION STEPS

STEP 1

Park the vehicle on a level surface and ensure it is secure. Alternatively, position the vehicle securely on a hoist, using the manufacturer's designated lifting points.

Review the kit's components and confirm that all parts are supplied. **Refer to the above parts checklist**

Starting on the passenger (left) side of the vehicle, locate and remove the OEM rubber grommet above the rear lower control arm front mount.

**If there is no OEM grommet, move to the next step.**

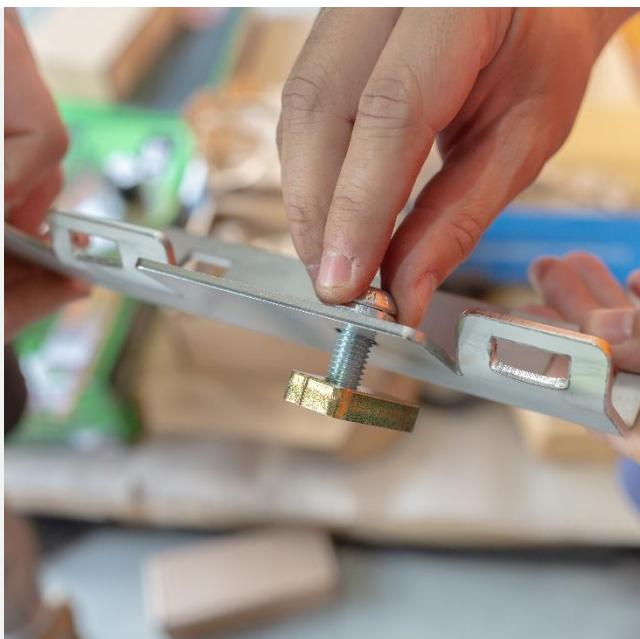
STEP 2



Install the supplied **M10 x 1.25 x 25mm Hex Head Bolt**, **M10 Spring Washer**, and **M10 x 22.5mm Plain Washer** through the mounting hole on the large flat mounting surface of the **Passenger (Left) Side Mount** and loosely install the supplied **M10 x 1.5 x 20 x 40 x 8mm Threaded Plate**.

Position the **Passenger (Left) Side Mount** against the chassis, inserting the **Threaded Plate** into the hole located in step 2 and tighten until the **Threaded Plate** grabs against the chassis internally.

STEP 3



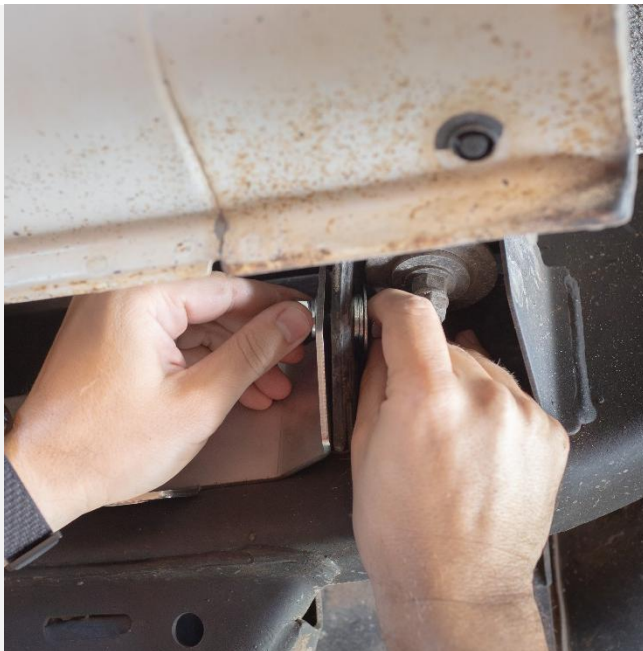
### RESM-D-LCR31

Install the supplied *M10 x 1.25 x 30mm Hex Head Bolt*, and *M10 x 22.5mm Plain Washer* through the *Passenger (Left) Side Mount* and mounting hole on the chassis body mount. Use the additional *M10 x 22.5mm Plain Washer(s)* to make the equivalent thickness of the body mount material, and secure it using the supplied *M10 x 38mm Plain Washer*, and *M10 x 1.25 Nyloc Nut*

Tighten down all hardware to the recommended torque settings outlined above.

**Some models may not have an existing mounting hole on the body mount. Use a paint pen to mark the mounting location and drill a hole to suit an M10 bolt, ensuring you paint the RAW surface.**

STEP 4



Install the supplied hose clamps and shock remote reservoir into the *Passenger (Left) Side Mount*. Using the *38-63mm Hose Clamps* for 2.0 Shock Reservoirs or the *65-89mm Hose Clamps* for 2.5 Shock Reservoirs.

Once the reservoir is positioned correctly, tighten down the Hose Clamps.

STEP 5



### RESM-D-LCR31

Superior 304 Stainless Steel 2.0/2.5 Shock Reservoir Mount Suitable For Toyota LandCruiser 80/105 Series Rear (Pair) – Installation Instructions

**STEP 6** Repeat steps 2-5 on the opposite side of the vehicle, using the *Driver (Right) Side Mount* in place of the *Passenger (Left) Side Mount*.

**STEP 7** Check over all hardware and conduct a test drive, ensuring clearance is sufficient and shock operation is functioning. If any issues arise, inspect the installation and address any concerns.

FINAL FITMENT EXAMPLE



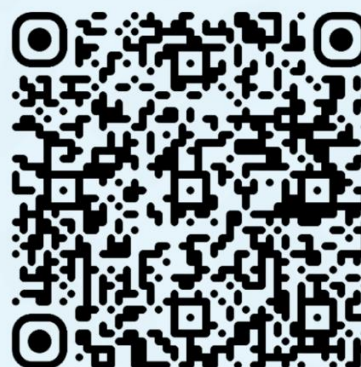
## CONTACT DETAILS

**Superior Engineering**  
8 Chrome Court, Burpengary  
4505 QLD Australia  
(07) 5433 1411  
[sales@superiorengineering.com.au](mailto:sales@superiorengineering.com.au)

## Product Coating Care & Maintenance Guide

Superior Engineering products are manufactured using a range of protective surface coatings designed to improve durability, corrosion resistance, and appearance in harsh off-road environments.

While these coatings are highly durable, proper care and maintenance will help maximise their performance and longevity. Scan the QR code to see our guide outlines and general care recommendations for the different coating types used across our product range.



### RESM-D-LCR31

Superior 304 Stainless Steel 2.0/2.5 Shock Reservoir Mount Suitable For Toyota LandCruiser 80/105 Series Rear (Pair) – Installation Instructions