



## SAFARI V-SPEC SNORKEL

**SS17HF**

**28/10/05**

ITEM	DESCRIPTION	QTY	PART NO
1	BODY – SNORKEL (SS17HF)	1	485-133-200
2	3 ½” AIR RAM ASSEMBLY	1	000-135-800
3	DUCT – INNER (SS17HF)	1	485-124-200
4	DUCT – CONNECTING (SS16HF)	1	485-123-500
5	BRACKET – UPPER MOUNTING	1	485-032-000
6	BOLT–HEX 6mm x 1.0mm x 14mm(SEMS)	6	000-002-100
7	SCREW – S/T 4.2mm x 16mm – S/S	4	000-951-300
8	INSERT – PLASTIC	3	000-960
9	STUD S/S 8mm x 1.25mm x 25mm O/L	3	000-110
10	WASHER – BODY 8mm x 30mm – S/S	3	000-311-300
11	NUT – NYLOC 8mm x 1.25mm – S/S	3	000-205-300
12	HOSE – RUBBER 82mm ID x 65mm	1	000-806-250E
13	CLAMP – HOSE 80/100mm	2	000-909
14	WASHER – BODY 6mm x 20mm	6	000-321
15	TEMPLATE	1	485-017-200
16	HOSE CLAMP – SIZE 56 (BLACK)	1	000-914/B



## SAFARI V-SPEC SNORKEL

# SS17HF

---

**NISSAN GU PATROL Series 4**

**ZD30 (DDTi) & TD42(Ti)**

---

<b>Fitment to:</b>	Left hand side
<b>Fitting time:</b>	Approx. 120 minutes (add 30 minutes for TD42(Ti) fitment)
<b>Special Tools:</b>	108mm Hole Saw 95mm Hole Saw (TD42(Ti) Fitment Only) Step Drill Sikaflex 227 Adhesive Sealant/Silicone (Sensor Safe) Loctite 243 (thread lock)

---

**Prior to commencing the installation, it is the installer's responsibility to verify that all components and particular the template (item 15) are correct.**

---

### **Instructions:**

1. Remove : Air cleaner assembly.  
: Left hand front wheel arch liner.  
: Left hand side indicator.  
: Air entry ducting.  
: Aerial assembly.
2. Tape the template to the upper and rear edge of the left hand guard. Using a felt tip pen, mark all hole positions. Remove template.

3. (a) Drill a pilot hole for each marked hole position. Using the step drill, drill the 3 snorkel body mounting hole positions to 16mm. Using the 108mm hole saw, drill the main hole. De-burr and paint all holes.  
  
(b) TD42(Ti) fitment only:  
Using the 95mm holesaw, drill a 95mm diameter hole from the engine bay side, through the internal panel (refer to drawing), protect the guard from any possible damage by placing a piece of wood up into the inner guard to prevent the holesaw from damaging the guard whilst drilling. De-burr and paint hole.
4. Using the necessary tools, bend flat approximately the first 35mm of the raised edge of the diagonal brace (refer to inset drawing) paint any bare metal surfaces caused by the bending.
5. Apply Loctite 243 to each of the stainless steel mounting studs (item 9) and install the studs finger tight into the snorkel body (item 1) mounting inserts. Fasten the upper mounting bracket to the snorkel body using the necessary hardware.
6. Carefully position the snorkel body onto the guard. With the snorkel body correctly positioned on the guard, mark the 3 upper mounting bracket hole positions on the 'A' pillar. Remove the snorkel body from the vehicle.
7. Drill the 3 marked hole positions to 8mm. De-burr and paint holes, insert the plastic body clips into the 'A' pillar.
8. Install the connecting duct (Item 4), fasten into position using the hex bolts (Item 6).
9. Using the step drill enlarge the 3 air cleaner mounting holes to 11mm. De-burr and paint holes, apply a small amount of sealant to each of the air cleaner housings rubber mounts, place a 6mm body washer (Item 14) onto each rubber mount. Remove the standard foam seal from the air cleaner housing entry flange and apply a liberal amount of sealant to the air cleaner housing entry flange and connecting duct flange.
10. Carefully install the air cleaner housing back into the vehicle, with the air cleaner housing correctly positioned, install a 6mm body washer (Item 14) to each of the air cleaner housing mounting studs, fasten using the standard nuts.
11. Ensure a watertight connection between the air cleaner housing entry flange and the connecting duct is achieved, applying more sealant if required or removing any excess sealant to ensure a neat job of the connection.

12. Position the hose and hose clamps onto the inner guard duct (Item 3) with the hose and clamps in position, install the inner duct into position, apply a liberal amount of sealant to the inside of the inner duct and around the outside surface of the snorkel body snout, to ensure a watertight connection between the snorkel body snout and the inner duct is achieved. Install the snorkel body to the guard, guiding the snorkel body snout into the inner duct. With the snorkel body correctly positioned, fasten to the guard using necessary hardware. Fasten the upper mounting bracket to the 'A' pillar using necessary hardware.
13. Ensure the inner duct is hard up against the shoulder on the snorkel body. With the inner duct correctly positioned at either end, secure the duct to the snorkel body using self tapping screw (Item 7). With the hose and hose clamps correctly positioned on both ducts, fasten the hose clamps.
14. Re-install the air cleaner element, lid etc. Re-install the aerial assembly and the side indicator, check the operation of both the aerial and side indicator before installing the wheel arch liner.
15. Install the air ram assembly to the snorkel body, and fasten the hose clamp.

**N.B: It is the installer's responsibility to ensure that all connections are watertight.**

# SAFARI

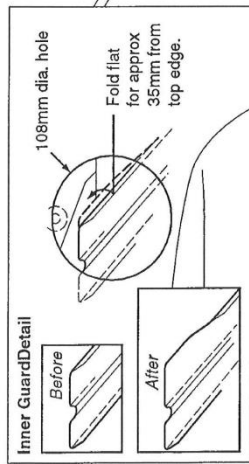
## 4X4 ENGINEERING

Model No: **SS17HF**

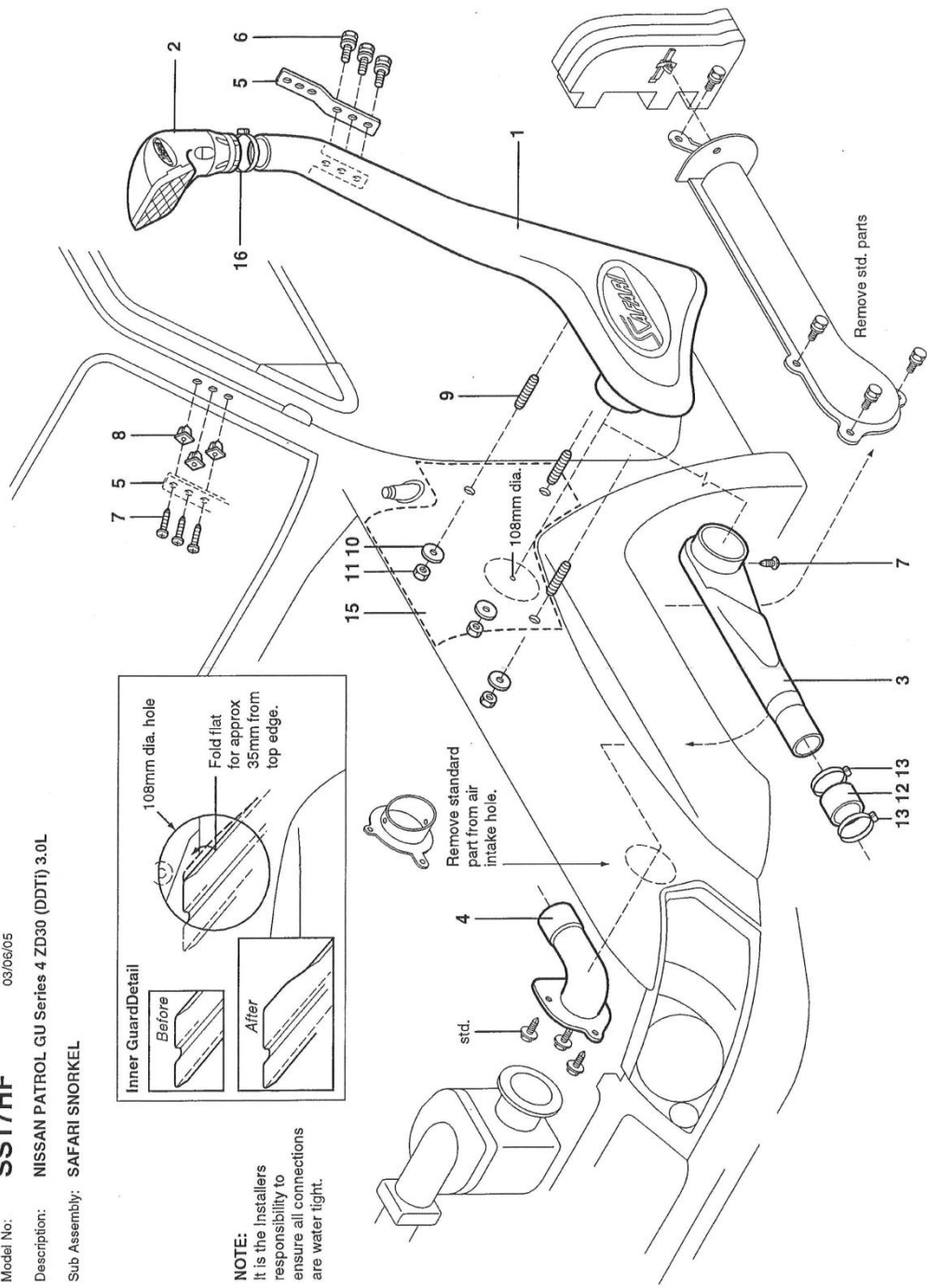
03/06/05

Description: NISSAN PATROL GU Series 4 ZD30 (DDT) 3.0L

Sub Assembly: SAFARI SNORKEL



**NOTE:**  
It is the installers responsibility to ensure all connections are water tight.



# SAFARI

## 4X4 ENGINEERING

Model No: SS17HF 9/12/2005  
 Description: NISSAN PATROL GU Series 4 TD42 (Ti) 4.2L Diesel  
 Sub Assembly: SAFARI SNORKEL

