

## Transchill Arctic Black Transmission Cooler kit Installation Guide for Mitsubishi Triton MQ/MR 2015-2024

This document is to be used as a guide for the installation of the Direction Plus Arctic Black Transmission Cooler Kit to a 2015-2024 Mitsubishi Triton MQ-MR 2.4L Diesel with automatic transmission. It is recommended that the installation of the product be carried out by a competent qualified mechanic.

### Included in the kit



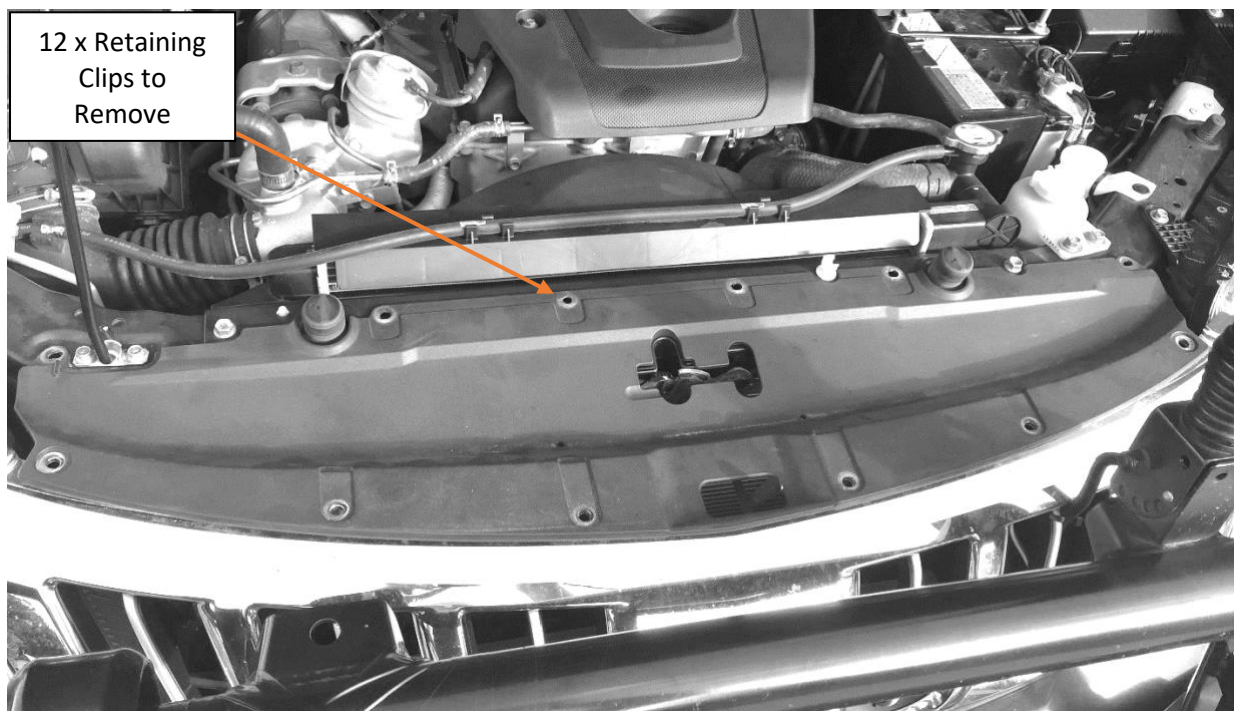
<i>Loose</i>	<i>Bagged</i>	<i>Cooler Mounting Hardware</i>
1 x Transmission Cooler (TCC14DP)	2 x 15-17mm Clamps (FMC10)	8 x M6x16 Bolts (SSSS304M616)
1 x Upper Mounting Bracket (TCB629DPK)	8 x Cable Ties (802078)	16 x M6 Flat Washers (FMW6)
1 x Lower Mounting Bracket	2 x M8x20 Bolt (SSSS304M825)	8 x M6 Nyloc Nuts (FMN6)
1x 1.5m of 3/8" Hose (7212-381BK)	2 x M8 Flat Washer (FMW8)	
	2 x M8 Spring Washer (FMSW8)	
	2 x M16 Sealing Washers (PLFW16)	
	2 x M16x1.5 to -6 Adaptors (DP816-6-M1615)	
	2 x -6 Straight Hose Tails (DPP0001-06)	
	1 x 6mL Loctite 567 (567-6ML-LOC)	

### Tools Needed:

- Spanners
- Sockets
- Screw Drivers
- Pliers
- Snips/Cutter
- Rags
- Small container for catching oil drips
- We suggest using a thread sealant like Loctite 567 or equivalent.

### Installation Guide

1. Begin by removing the radiator trim cover. It is held in place by several clips. Once the clips are removed it just lifts off.



*MQ Triton Front of Engine Bay – Clips have already been removed in this image.*

2. Remove the top M8 nut on the passenger side of the vehicle. This is one of the new transmission cooler bracket mounting locations. Remove the M8 Bolt just to the right of the stock transmission cooler mount near the center of the vehicle.
3. Assemble the transmission cooler to the brackets in the kit. The assembly will use all 8xM6 bolts, 16xM6 flat washers and 8xM6 nyloc nuts. The cooler mounts to the rear face of the brackets.
4. Secure the M16x1.5 threaded adaptors to the ports of the transmission cooler, making sure to use a 16mm sealing washer under each and Loctite 567 (or similar) on the thread to secure them in place.

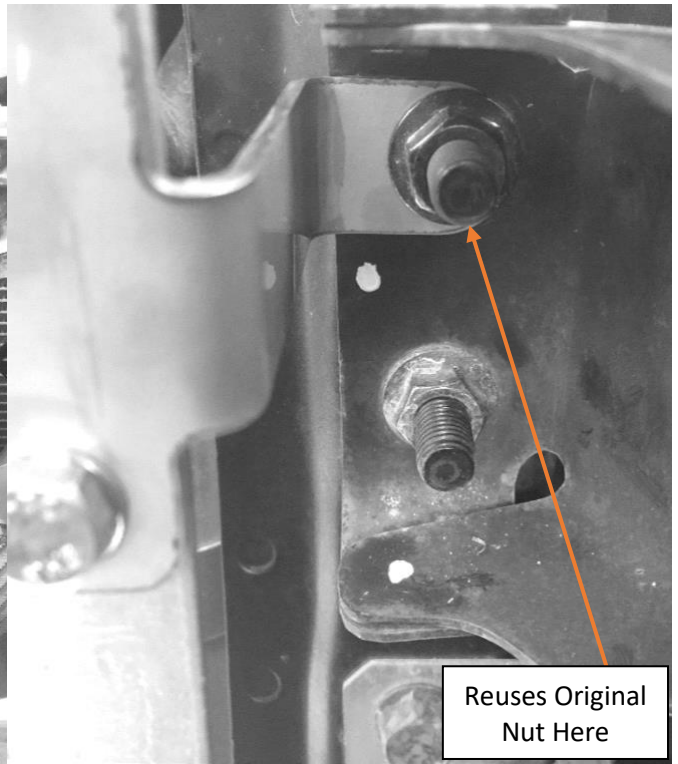
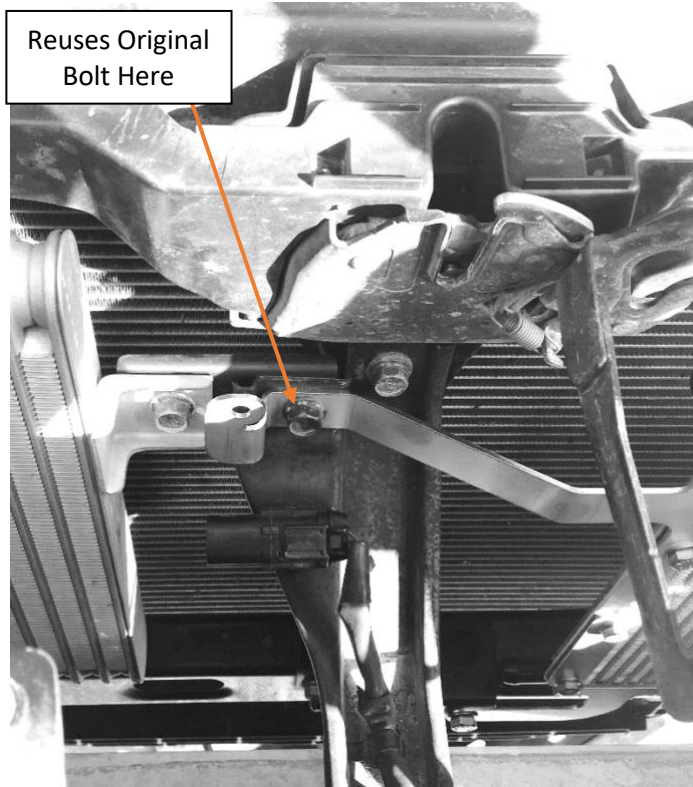


*Cooler assembly with fittings in place at correct orientation*



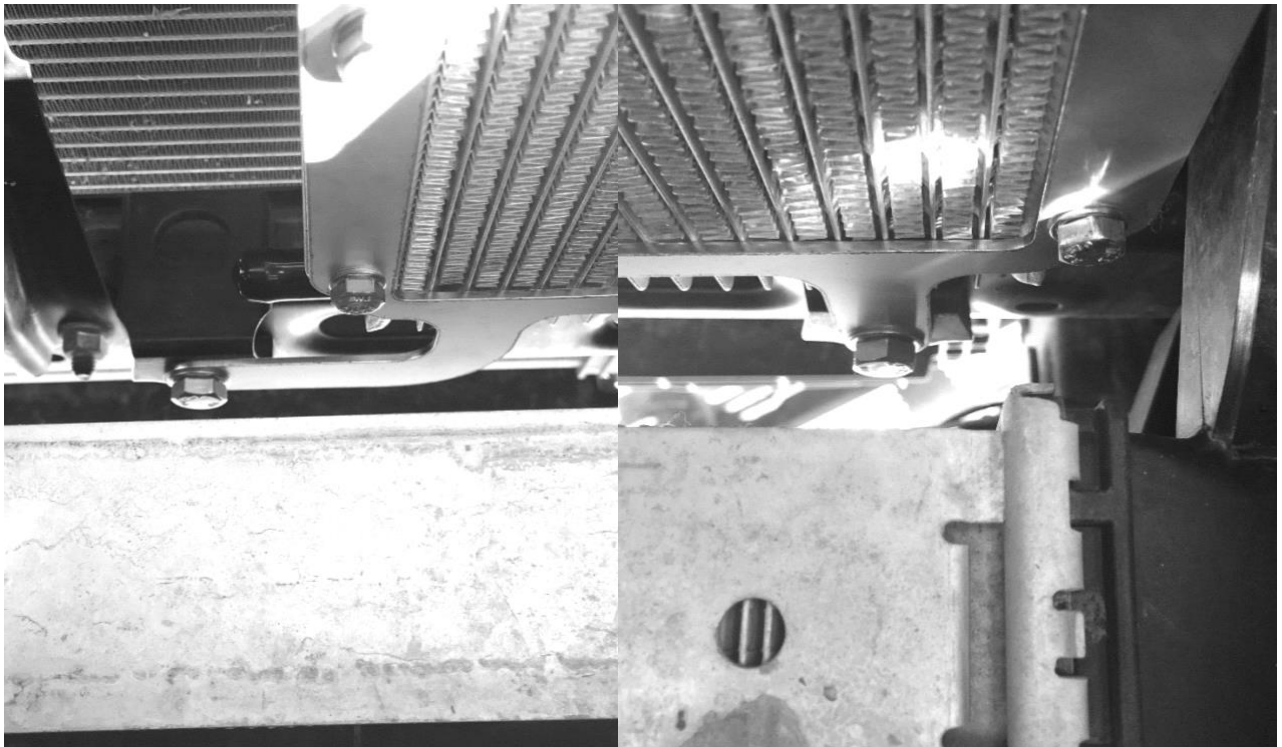
*Transmission Cooler Assembly Bolted in Place. Note: Fittings not shown in image.*





*Top Center and Top Outer Transmission Cooler Mount*

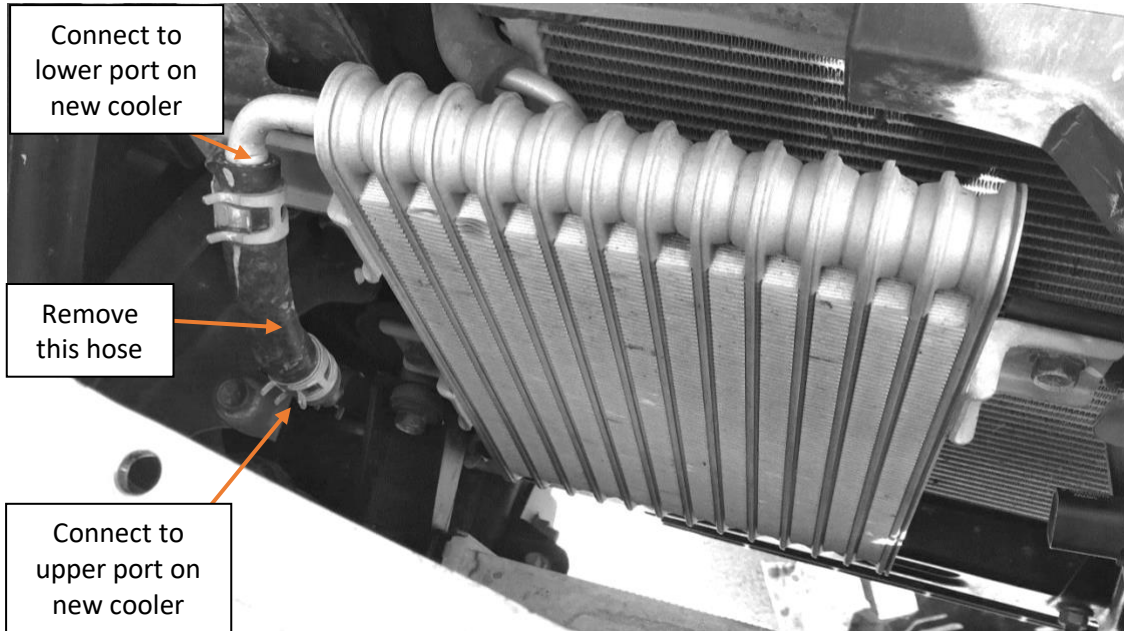
5. Bolt the new transmission cooler and bracket assembly into the vehicle locating the top right corner off the stud the nut and the M8 bolt that were removed in step 2.
6. Use the two M8x20 bolts, flat washers and spring washers to secure the bottom bracket to the two empty threaded holes on the front of the vehicle.



*Lower Transmission Cooler Mounts, center on left, outer on right*

7.

8. Cut the 3/8" hose in half and push one end of each onto the two -6 straight fittings.
9. Use the first -6 straight fitting on the lower port, again using Loctite 567 (or similar) to secure in place.
10. From the lower port fitting, run the hose to the outlet port on the stock transmission cooler, measure and cut to length and then secure in place with a clamp.



*Stock Transmission Cooler. Remove Hose on the left.*

11. Use the second -6 straight fitting on the upper port, again using Loctite 567 (or similar) to secure in place.
12. From the upper port fitting, run the hose to the return line that used to connect to the stock transmission cooler, measure and cut to length and then secure in place with a clamp.
13. Use cable ties to secure any loose cooler line to prevent rubbing.
14. The cooler itself holds 500mL of fluid, plus 70mL per 1m of hose, calculate the total amount and top up the transmission using the correct factory specified transmission fluid.
15. Reinstall the radiator trim panel in reverse as it was removed in step 1.

## End of Installation Guide