

TOYOTA Hilux
HOOD GAS STRUTS
Installation Instructions




Model year: 2015-2018; 2018-

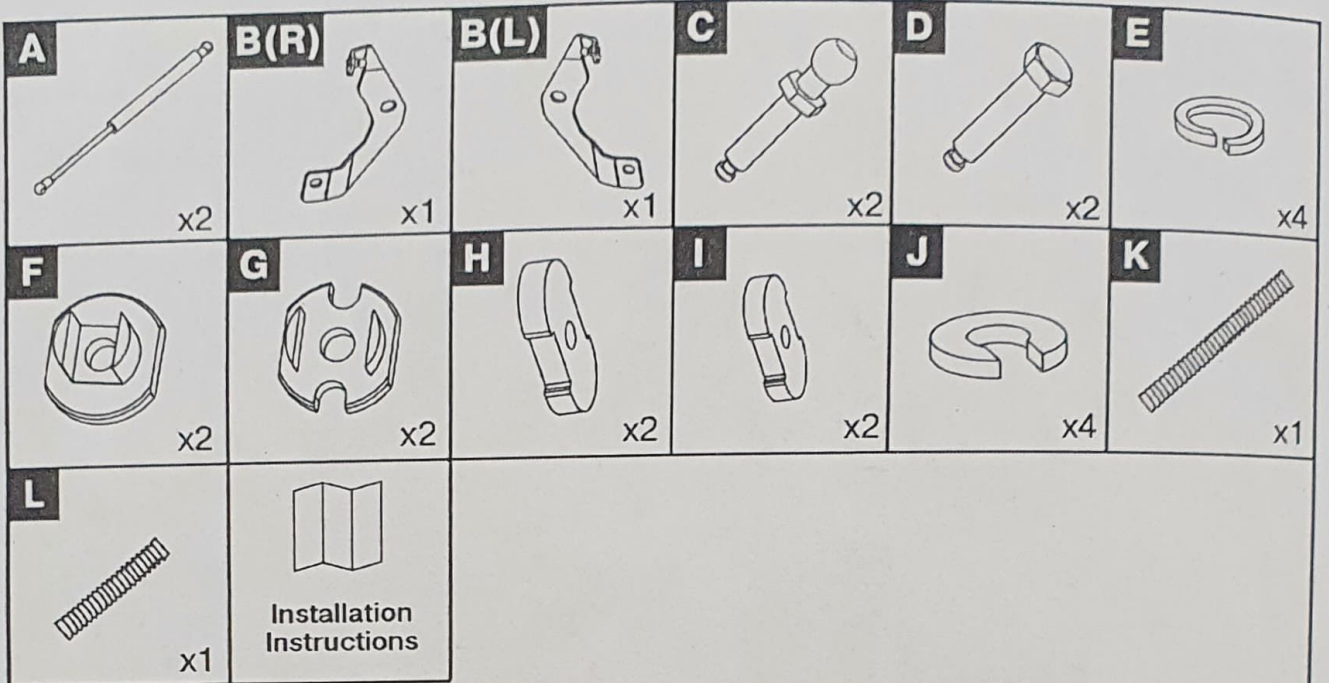
Part No.: 2A.ST.5708.1

Compatibility: all types

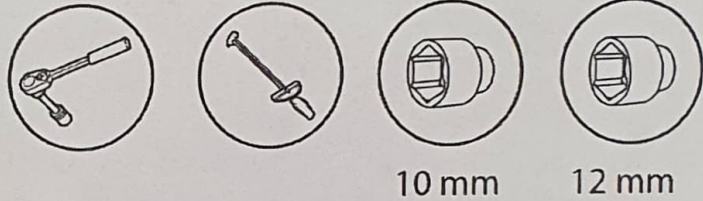
Weight:  1 kg

Installation time:  30 min



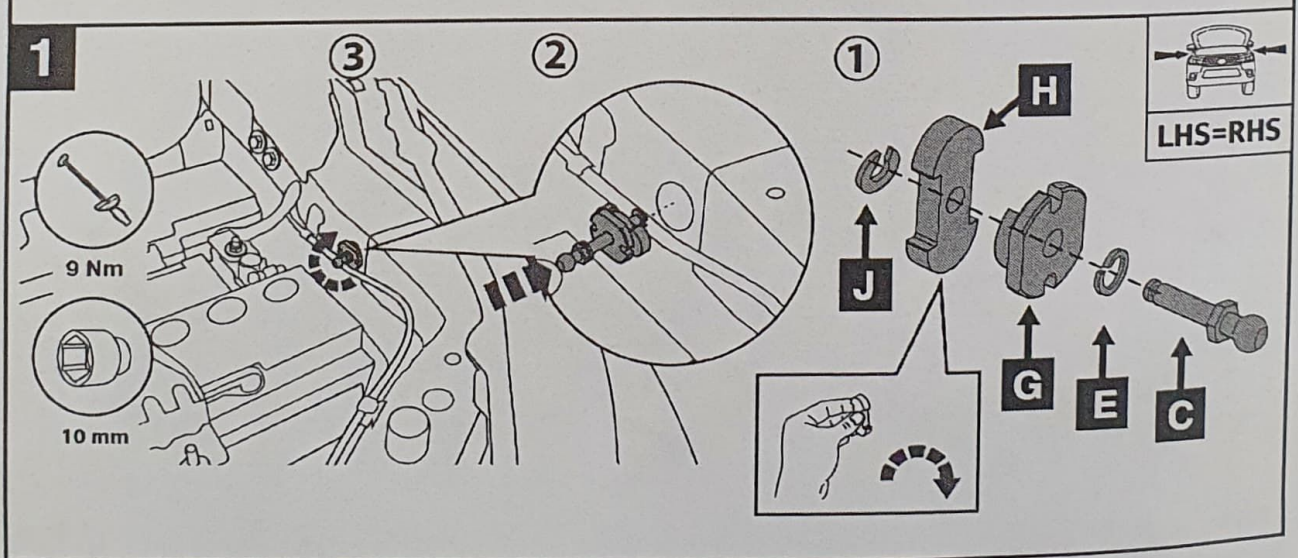


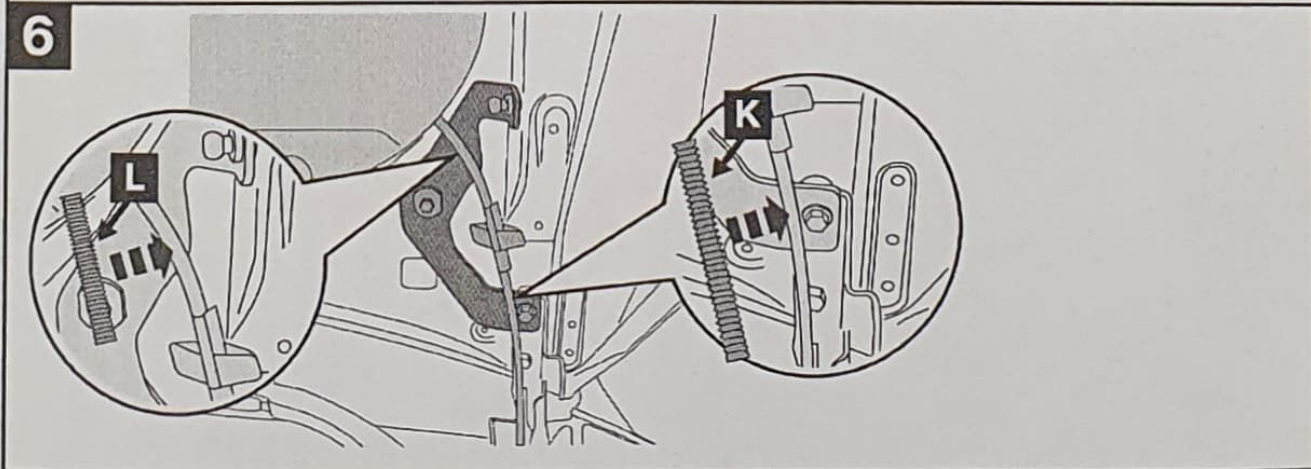
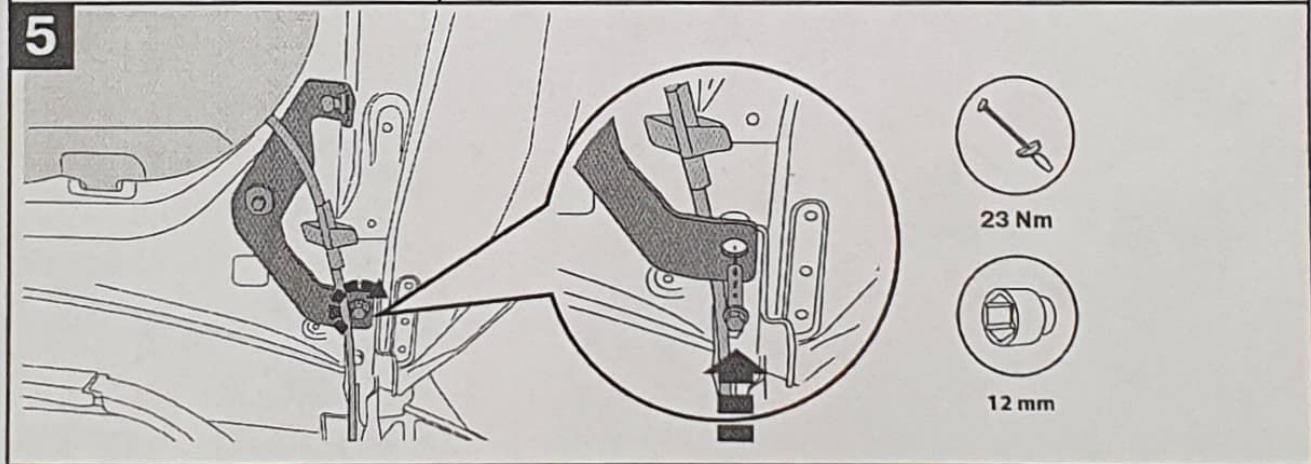
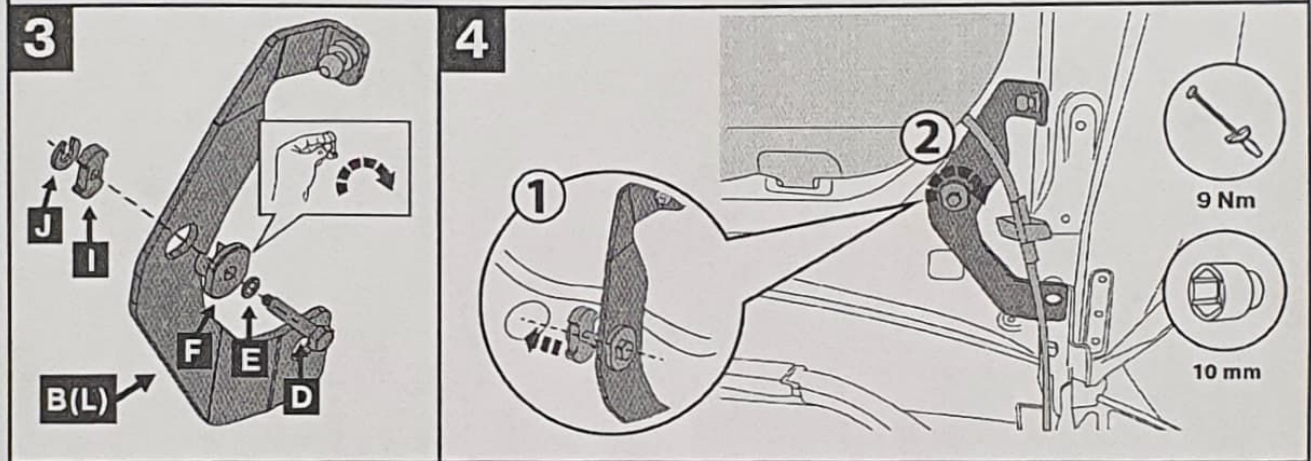
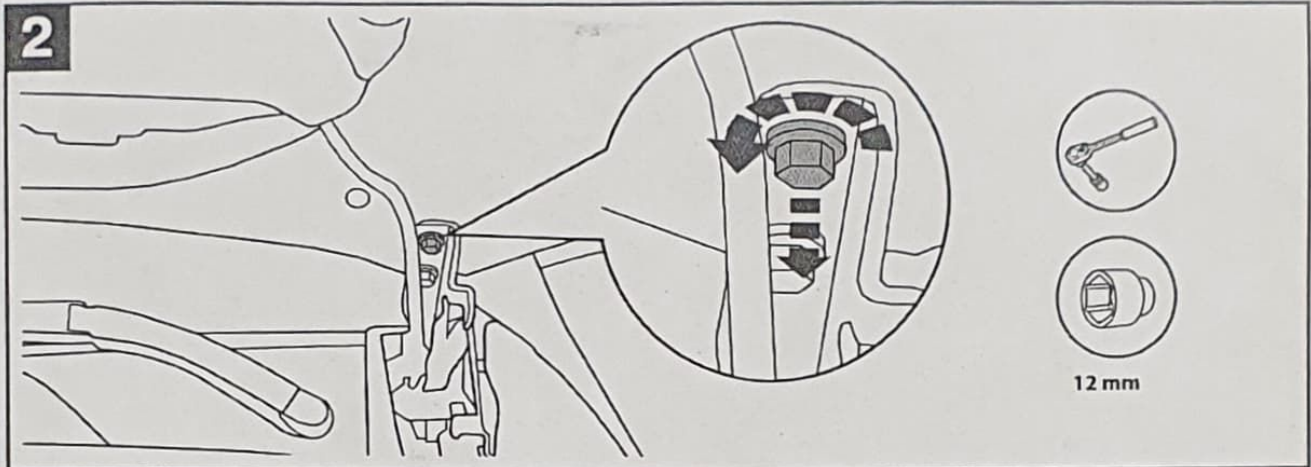
Required Tools:

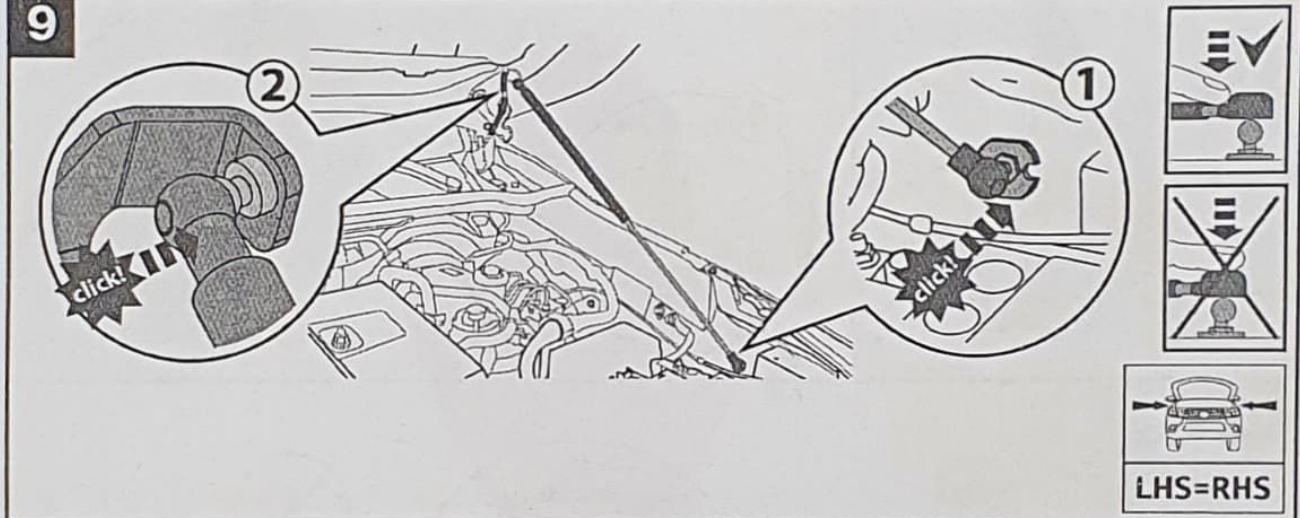
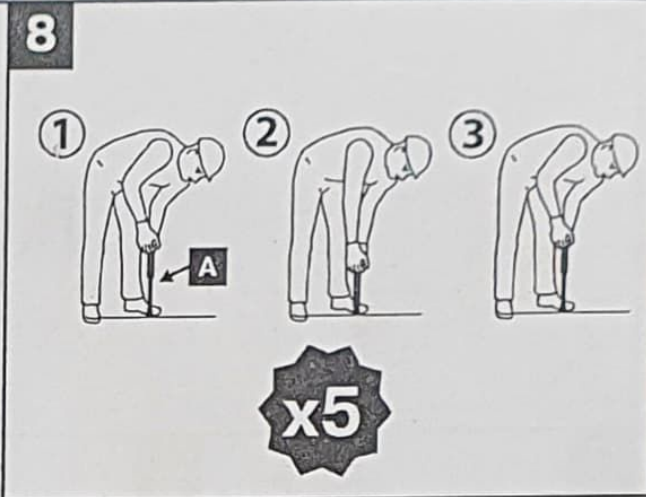
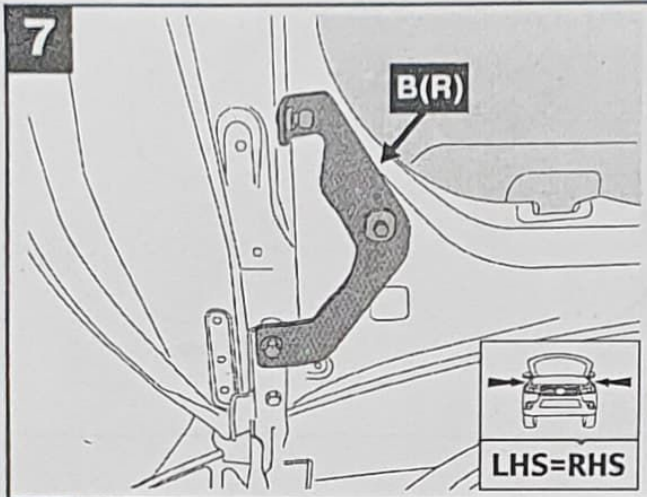


! Attention!

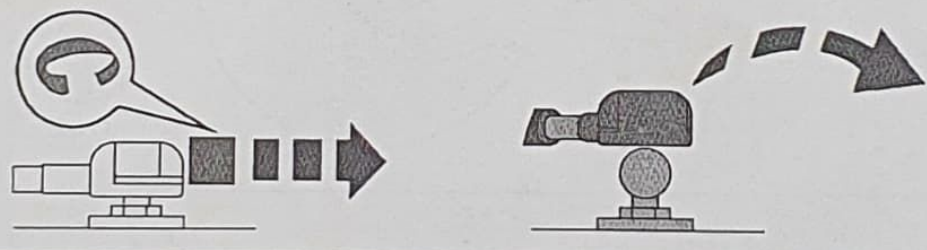
Before installation of gas struts, open the hood and check that there is no additional equipment installed in engine bay which can block installation.







! Attention! If it's needed to remove installed gas strut, disassemble how shown on the picture. Operate with the hood being totally open.



After installation, check the correct operation of all elements.