

# Digital dual air press gauge

- A. INPUT RESISTANCE: 10 ~ 180 Ω
- B. UNITS TYPE: PSI / Bar
- C. AIR PRESS GAUGE DISPLAY: DIGITAL TYPE → 0-220 PSI (0-15.2 Bar)
- D. DPI OF DIGITAL DISPLAY= 1 PSI / 0.1 Bar
- E. IF AIR PRESS GAUGE CAN NOT READ THE AIR SENSOR SIGNAL, THE DIGITAL NUMBER WILL COUNT DOWN TO "0" AND FLASHING FOR WARNING.

## INSTALLATION INSTRUCTIONS:

### GAUGE POWER WIRE HARNESS:

- Red-12v Ignition Switch (+)
- Black- Engine Ground
- Orange- Optional Headlamp 12v (+)

### SENSOR WIRE HARNESS :

- DIGITAL AIR PRESS UPPER DISPLAY
- Green – Connect to air press sensor "G"
- Black – Connect to air press sensor "M"

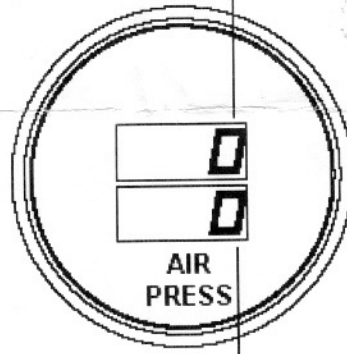
### DIGITAL AIR PRESS LOWER DISPLAY

- Blue-connect air press sensor "G"
- Black-connect air press sensor "M"

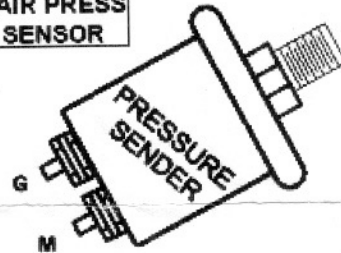
### AIR PRESS SENSOR :

- G - Connect to gauge green (Blue) wire.
- M – Connect to gauge black wire.

### FRONT VIEW



### AIR PRESS SENSOR



1. Disconnect the negative battery cable.
2. Connect the orange wire to the head lamp switch to dim the gauge when the headlamps are turned on.
3. Connect the red wire to 12 volt switched source. When wiring this connection install a 3 amp fuse within 20 inches of the source. For easy installation in the fuse panel you can get an "add a circuit" which looks like a fuse with an additional wire attached; this is available at a local auto parts store.
5. The green (Blue) wire needs to be connected to the "G" post of the sender.
6. Connect the Black Wire need to be connected to any ground connection, or you can run a wire to the negative side of the battery.
7. Reconnect the negative battery cable.

### BACK VIEW

