



## Kut Snake Flare Fitting Instructions For Nissan Patrol GU

Before you begin, read the following instructions carefully and make sure you understand them.

**YOU WILL BE DRILLING HOLES IN YOUR CAR PANELS.**

If you are not confident in your abilities, or have doubts as to if you can do the job as described we recommend having them installed by a professional accessories installer.

We accept no liability for any mistakes or damage that you may cause by fitting this product. Installation time is 4-5 hours approximately for a novice & although they are not hard to fit, it's easy to get it wrong if you're not careful

### Things you need:

Drill with 4mm drill bit

5mm Allen Key (works best in a cordless drill)

Heat gun (Hair Dryer will work also)



### Preperation:

Before you begin fitting your new flares, you will need to remove the old flares from the vehicle. There is access to the bolts securing them from inside the engine bay (you will need to remove the air filter assembly to gain access)



Once the old flares have been removed it is a good idea to clean and polish the car where the flares will be fitted.



### Fitting:

Find the center of the bolt notches in the flare (Figure 1) and pre-drill the holes using a 4mm drill then fit the rubber to the section of the flare that faces the body (Figure 2)



cente.

(Figure 2)



(Figure 1) Using a penny washer can help to find the

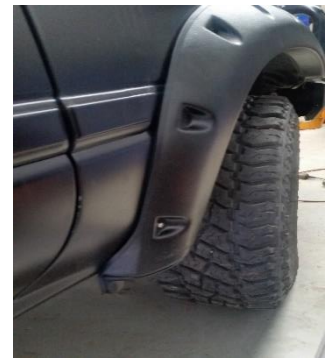
Starting with the front of the car (I always do the side with a snorkel first) offer the flare up against the guard.

You will need 2 people for the next part, align the front edge of the flare with the fold in the body making sure there is an adequate gap between the flare and bull bar. The back lip of the flare should be tucked under the lip of the guard, applying

firm pressure, push the flare towards the park light so it pulls in snugly against the body. It may be necessary to heat the flare slightly to make it more pliable. Drill the first hole closest to the parker and fit the screw (*don't do up tight just yet*) making sure the lip of the flare is under the lip of the guard. Then go to the very bottom (Figure 4) drill and screw, whilst holding firm pressure on the flare. Then drill and screw the middle hole, followed by all remaining screws left to be done.

**Pro tip:** Tighten all bolts only enough to hold the flare until all screws are drilled and fitted, it may be necessary to loosen all the bolts to make sure the rubber is sitting in neatly, then tighten, you will notice as you tighten the flare will mould to the body shape. **DO NOT OVERTIGHTEN.**

A small dab of super glue on just the end of the rubbers keeps them in place on the flare.



Repeat for the passenger side using the first side as a reference for landmarks (distance from the front bar, body moulds ect.)

Now its on to the back and you should be starting to get the hang of it by now. Starting with the passengers rear quarter panel (*where the fuel flap is*) hold the flare up to the panel making sure it is flush with the door opening & the lip is under the guard (*Figure 5*) making sure there is good clearance for the fuel flap & mud flap (*Figure 6*)

(Figure 5)

(Figure 6)



Now for the tricky bit that



has most people scratching their heads.

The rear door sections: this is a 2 piece section.

The inner part is ornamental only, so when the door is open you are not looking at the inside of the flare see (*Figure 7*)

(Figure 7)

Line up the door piece with the one already fitted to the  $\frac{1}{4}$  panel, making sure the gap is the same & that the edge of the flare is sitting on the door edge (*figure 8*)



You can leave out the infill piece at this stage as this can be fitted once you have all 3 holes drilled.

(Figure 8)





Drill and screw the top hole, you will notice that the flare is slightly twisted and sits out at the bottom (Figure 9)

Applying slight twisting 'tune' the shape of the lower section to determine where the bottom hole goes remembering the flare should follow the wheel arch. Drill and screw the bottom hole then the middle (Figure 10)

Check to make sure that the door opens and closes without fouling any of the bodywork. Should there be any fouling the best way to gain clearance is with a flappy disc on a 4" angle grinder & removing a small amount material from the fouling area at a time. This should be done with caution as its easier to remove a bit each time than to put it back if you take off to much.



(Figure 9)



(Figure 10)



The final step is to make sure all the rubbers are sitting neatly, and all the bolts are up firm.

At The 4wd Shed we love our 4WDS, and love to see our customers rigs, so please take a few photos and post them on facebook and tag us using @the4wdshed and use the hashtag #the4wdshed so others can admire your handy work.

### **Our Mission at The 4WD Shed:**

We are committed to providing quality parts to you, our customer, so should you have any technical enquires or 'how to' questions please call us on  
03 9720 8783  
or after hours on



0417 005 601 (I will answer if I can or text me and I will get back to you)

Remember we have a large range of gear for your 4WD so be sure to check out our product range.

If you haven't already please take the time to leave us feedback as this is important to us to help deliver great products. If you have a problem with any products PLEASE CONTACT US before leaving negative feedback so we can address any issues for you.

**Phill Carr**

The 4WD Shed

66a Barry Street, Bayswater, VIC, 3153

PH: (03) 9720 8783 E: [phill@the4wdshed.com](mailto:phill@the4wdshed.com) or [sales@the4wdshed.com](mailto:sales@the4wdshed.com)

FB: [/the4wdshedbayswater](https://www.facebook.com/the4wdshedbayswater) T: [@the4wdshed](https://www.instagram.com/the4wdshed) G+: [The4WDSHed](https://plus.google.com/+The4WDSHed)



**For Legal & Insurance Purposes, we do not recommend that you undertake the installation process yourself. Please consult a professional to fit your flare kit.**

**The information in this guide is provided for informational purposes only, and should not be construed as advice or a recommendation to undertake installation yourself.**

**You should not act on the basis of any content included in this guide without seeking professional advice. We will not take responsibility or claim liability for any damages occurring from DIY installation.**

**Please provide this information guide to your installer.**

©This information guide was produced by The 4wd Shed and is protected by copyright law under The Australian Copyright Act 1968