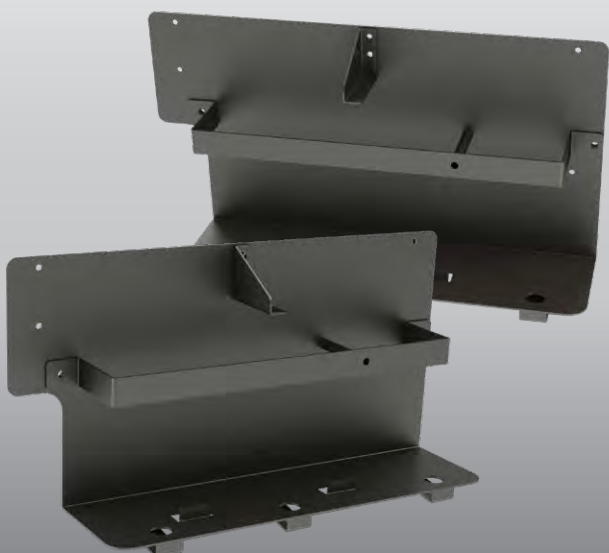


NEW BATTERY TRAY

COMPATIBLE WITH PX RANGER BACK SEAT INSTALLATION

This tray is designed to be installed behind the back seat of a PX Ranger and houses a slimline 100Ah or 150Ah batteries up to 110 x 290 x 560mm will fit. Roadsafe recommends the REMCO RM12-150FT available from Federal Batteries. AGM or Lithium battery compatible!



MADE IN AUSTRALIA
E-COATED FOR SPARK RESISTANCE
DEVELOPED IN AUSTRALIA

*Suppliers/brands are for reference purposes only.

PRODUCT CODE BT104-BLACK
BARCODE 9319478670075

ROADSAFE.COM.AU

A division of Specialist Wholesalers Pty. Ltd. ABN 64 163 280 279
VIC Ph: 03 8687 1700 | QLD Ph: 07 3737 7420 | Email: sales@roadsafe.com.au