



SAFARI R-SPEC SNORKEL

SS160R

01/04/15

ITEM	DESCRIPTION	QTY	PART No.
1	BODY - SNORKEL	1	730-133-000R
2	3½" AIR RAM ASSEMBLY	1	000-135-650
3	DUCT - INNER	1	730-124-000
4	BRACKET - UPPER MOUNTING	1	730-032-000
5	BOLT - HEX 6mm x 1.0mm x 14mm	3	000-002-100
6	POP RIVET - 4.8mm x 14mm	3	000-958-350
7	SCREW - S/T 4.2mm x 16mm	1	000-951-300
8	STUD - S/S 8m x 1.25mm x 25mm O/L	3	000-110
9	WASHER – BODY 8mm x 30mm	3	000-311-300
10	NUT - NYLOC 8mm x 1.25mm	3	000-205-300
11	HOSE – RUBBER 82mm ID x 105mm	1	000-806-400
12	CLAMP – HOSE 80/100mm	2	000-909
13	TEMPLATE	1	730-017-000
14	HOSE - CLAMP - SIZE 56 (BLACK)	1	000-914/B

WARNING!!

**IT IS AN INSTALLER
RESPONSIBILITY TO VERIFY ALL
COMPONENTS, AND
PARTICULARLY THE TEMPLATE
ARE CORRECT, BEFORE
STARTING ANY PART OF THE
SNORKEL INSTALLATION.**

**(CHECK TEMPLATE AGAINST
SNORKEL BODY)**



SAFARI R-SPEC SNORKEL SS160R

HOLDEN RA RODEO 2003 MODEL 3.0 iTD (4JH1TC ENGINE)

Fitment to:	Right hand side
Fitting time:	Approximately 120 Minutes
Special Tools:	105mm Holesaw Pop Rivet Gun Sikaflex 227 Adhesive Sealant Step Drill

Instructions:

1. Remove: Right Hand Wheelarch Liner
Air Cleaner Assembly
Air Intake Ducting
Right Hand Side Indicator
Right Hand Side Flare (if fitted)
Right Hand Side Rubber Seal
2. Tape the template to the upper rear corner of the right hand guard. Using a felt tip pen, mark all hole positions. Remove template.

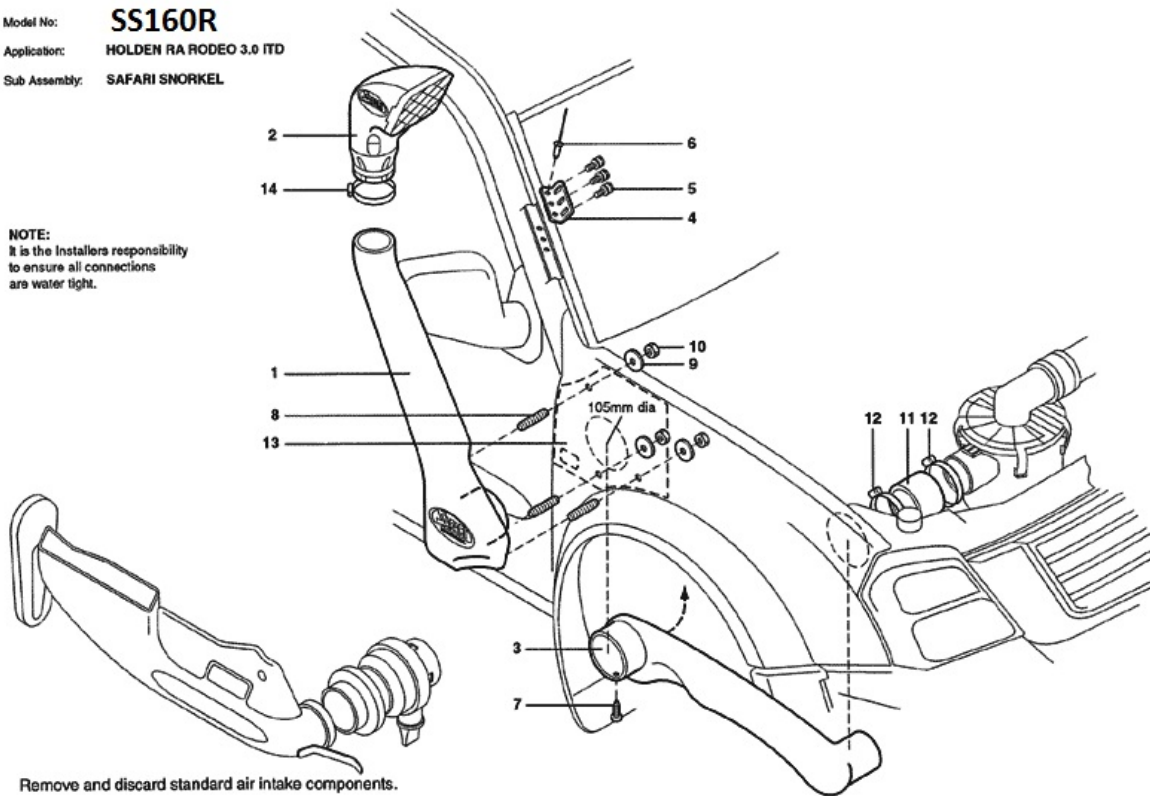
3. Drill a pilot hole for each hole position. Using the step drill, drill the 3 snorkel mounting hole positions to 16mm. Using the 105mm holesaw, drill the main hole position. De-burr and paint all holes.
4. Screw the 3 mounting studs into the snorkel body inserts, fasten the upper mounting bracket to the snorkel body. Carefully position the snorkel body onto the guard, with the snorkel body correctly positioned on the guard, mark the 3 upper mounting bracket hole positions on the 'A' pillar. Remove the snorkel body from the vehicle, remove the bracket from the snorkel body.
5. Drill the 3 marked hole positions to 5mm, deburr and paint holes. Apply Sikaflex sealant to the base of the mounting bracket, fasten the mounting bracket to the 'A' pillar using pop rivets (Item No. 6), re-install the rubber weather seal, ensure the seal is clipped correctly back into the channel.
6. Remove the plastic clip from the right hand side indicator loom, apply Sikaflex sealant to the loom and stick the loom to the body, place a piece of masking tape over the loom to hold it in place whilst the Sikaflex dries.
7. Install the inner duct up into the inner guard, with the inner duct in position, apply a liberal amount of Sikaflex sealant to the inside of the duct, apply Sikaflex sealant to the snorkel body snout to ensure a watertight seal between the snorkel body snout and the inner duct is achieved, install the snorkel body to the guard, guiding the snorkel body snout into the inner duct, with the snorkel body correctly positioned, fasten to the guard using necessary hardware, fasten the snorkel body to the upper mounting bracket.
8. With the inner duct correctly positioned, secure the inner duct to the snorkel body using self taper screw (Item No. 7), ensure the inner duct is hard up against the shoulder on the snorkel body snout before securing with the self taper.
9. Position the hose and hose clamps onto the inner duct, re-install the air cleaner housing to the vehicle, with the connection hose and clamps correctly positioned, fasten hose clamps.
10. Re-install the side indicator and re-connect the loom, re-install the flare to the guard (if fitted), re-install the wheelarch liner.
11. Install the air ram assembly to the snorkel body and fasten clamp.

N.B.: It is the installer's responsibility to ensure all connections are watertight.



Model No: **SS160R**
Application: **HOLDEN RA RODEO 3.0 ITD**
Sub Assembly: **SAFARI SNORKEL**

NOTE:
It is the Installers responsibility
to ensure all connections
are water tight.



Remove and discard standard air intake components.